

A



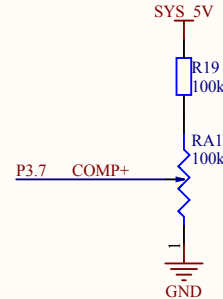
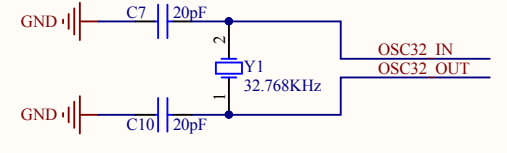
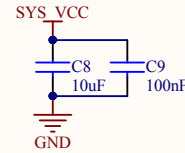
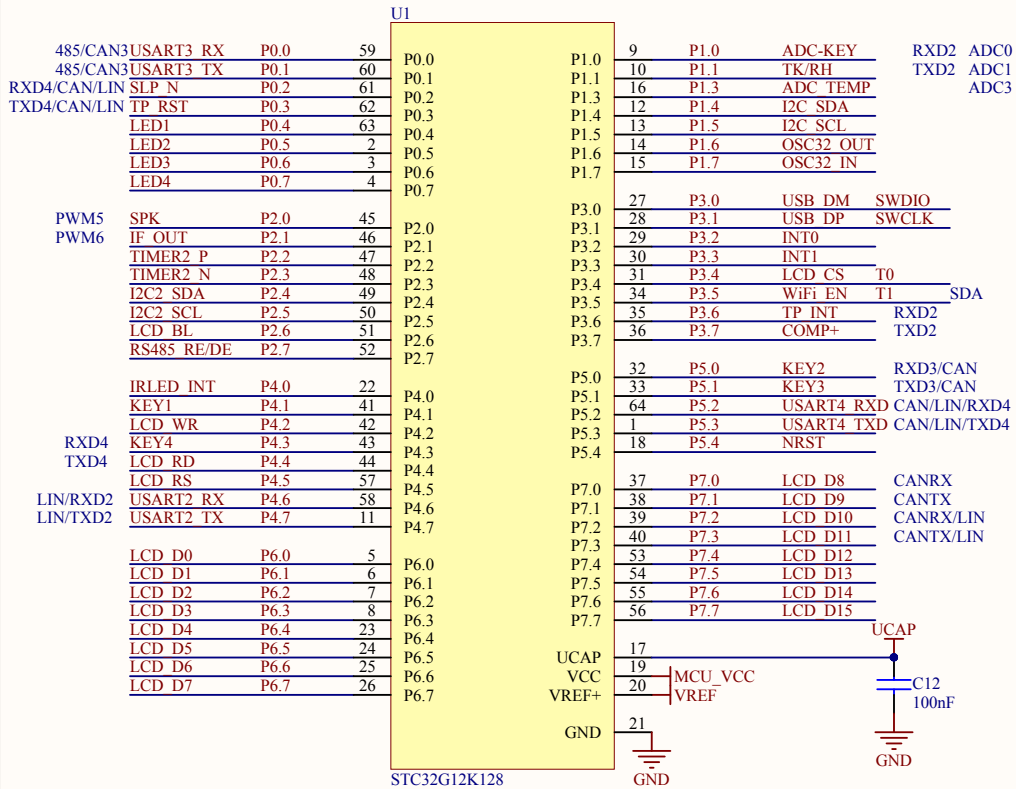
C



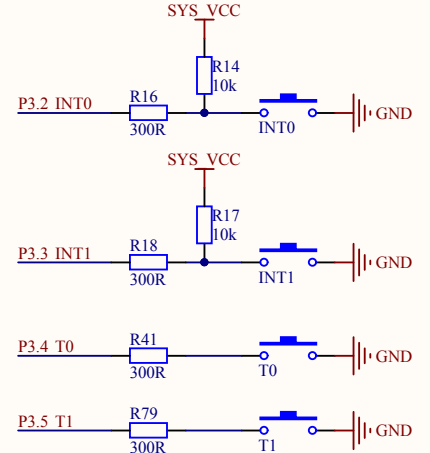
2

I

MCU

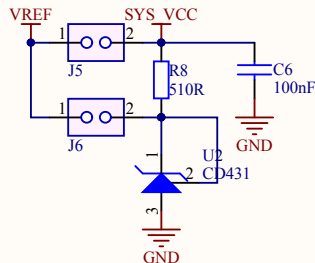


与内部1.19V基准电压比较，做掉电检测



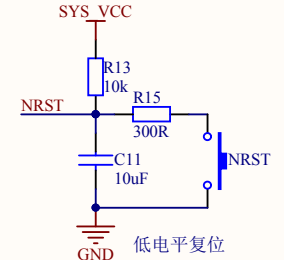
设置“P3.2/P3.3为00才可以下载程序”时，
下载程序前要先同时按下INT0和INT1键再上电

基准电压



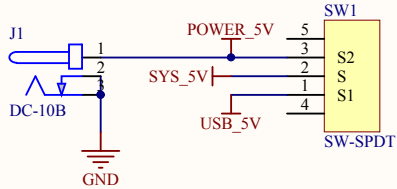
基准电压默认使用SYS_VCC
使用ADC时可通过内部1.19V做参考反推被测电压
基准电压为SYS_VCC时连接J5
基准电压为2.5V时连接J6

复位

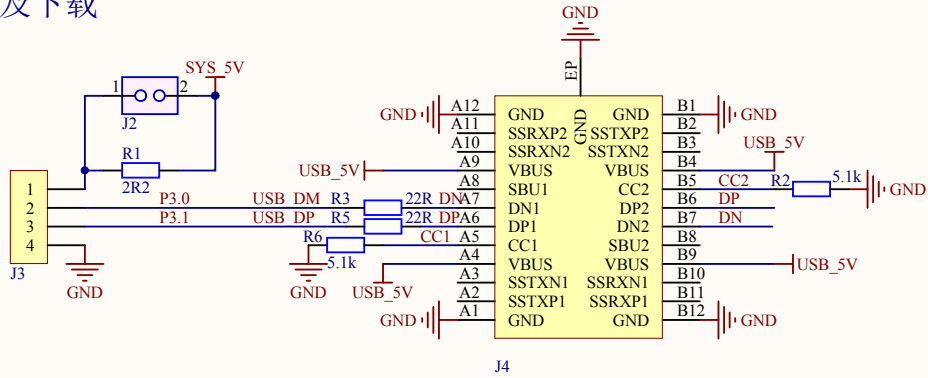


Title		
Size	Number	Revision
A4		
Date:	2023-03-03	Sheet of
File:	E:\LF\MCU.SchDoc	Drawn By:

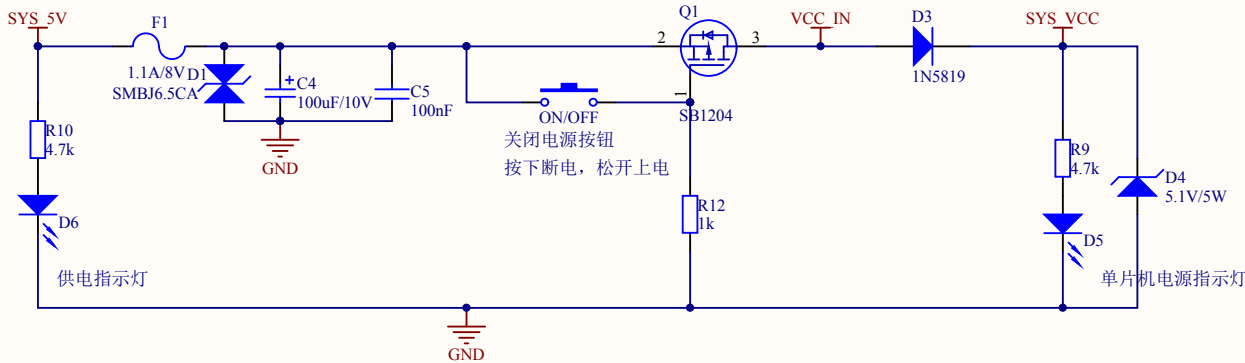
供电选择



USB供电及下载



电源



3.3VLDO

