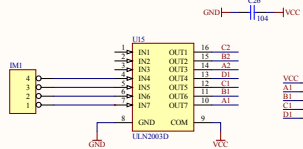
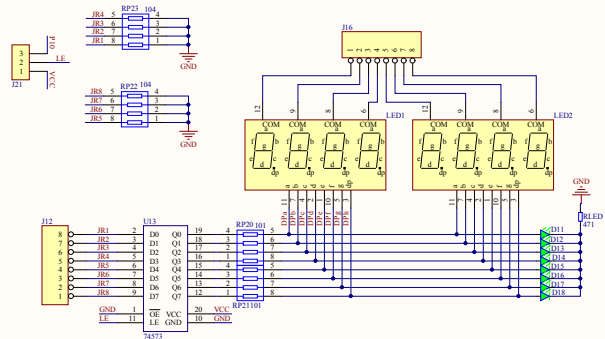


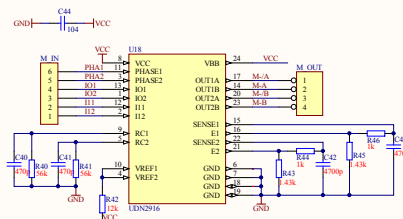
## 五线四相步进电机



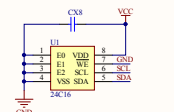
## 动态数码管



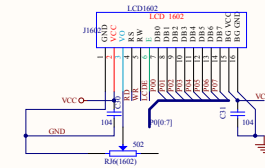
## 四线双极性步进电机



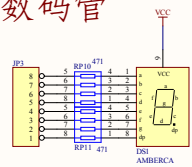
## EEPROM



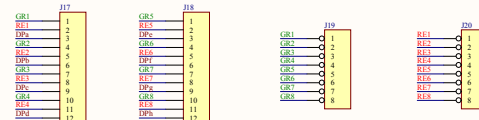
## LCD1602



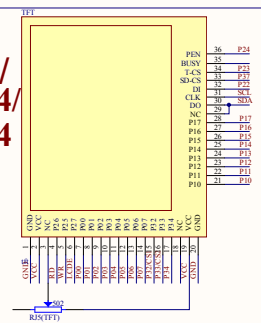
## 静态数码管



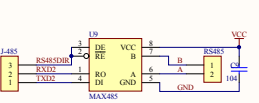
## 8\*8双色点阵



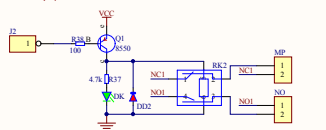
## TFT 彩屏/ 12864/ 19264



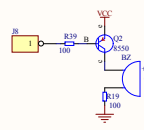
## RS485



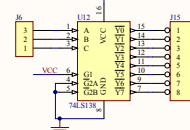
## 继电器



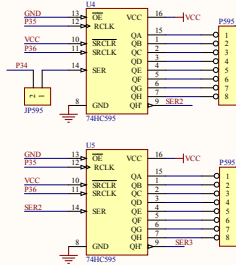
## 蜂鸣器



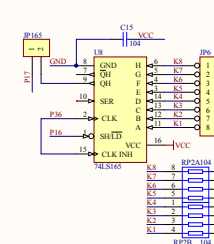
## 138译码器



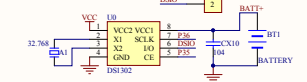
## 74HC595



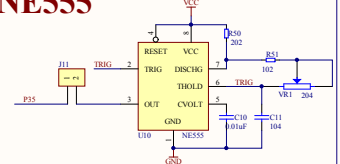
## 74HC165



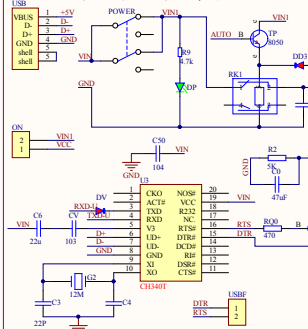
## DS1302



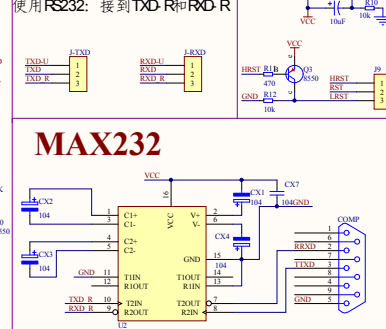
## NE555



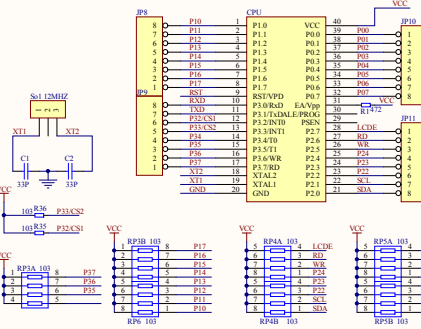
## USB自动下载



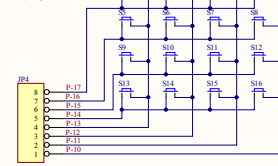
## 复位



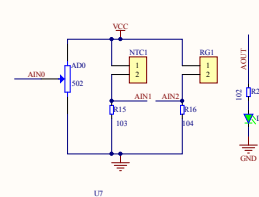
## MCU



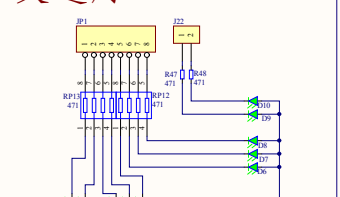
## 矩阵键盘



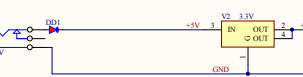
## AD/DA/光敏/温敏



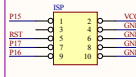
## 交通灯



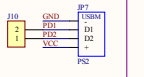
## 电源模块



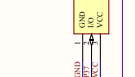
## ISP



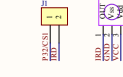
## PS2



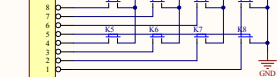
## 温度



## 红外



## 独立按键



SHEET NAME:	HC6800 EM3 V2.2
SHEET SIZE:	2500mil*1500mil
AUTHOR NAME:	Zhou
TIME:	2012-12-22