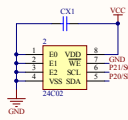
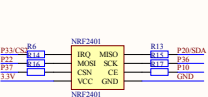


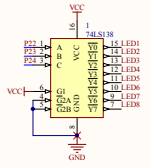
## EEPROM



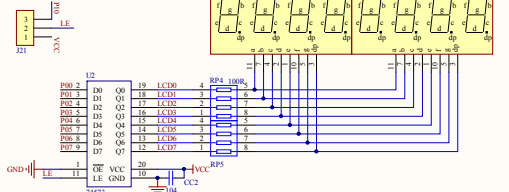
## 无线接口



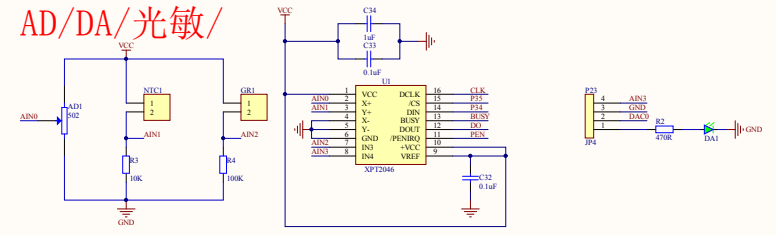
## 138译码



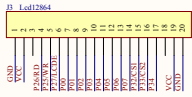
## 数码管



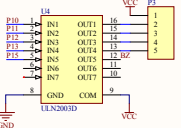
## AD/DA/光敏/



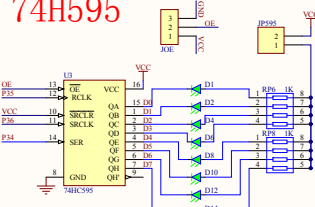
## LCD12864



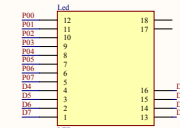
## 五线四相异步电机



## 74H595



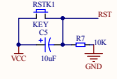
## LED点阵



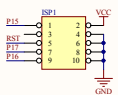
## DS1302



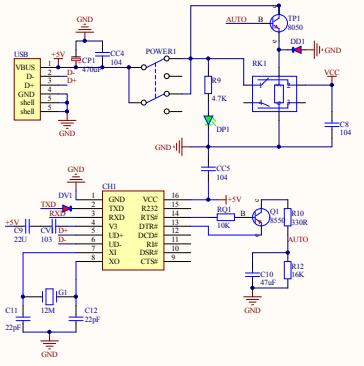
## 复位



## ISP



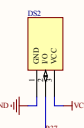
## USB自动下载及电源



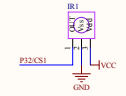
## 蜂鸣器



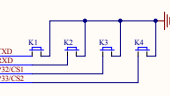
## 温度



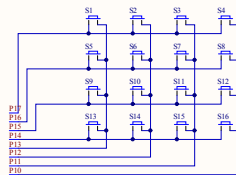
## 红外线



## 独立键盘



## 矩阵键盘



文件名: HC6800-ES V2.0原理图  
尺寸: 公司名: 深圳普中科技有限公司  
作者: 甘 完成时间: 13-5-25

Comment	Description	Designator	Footprint	LibRef	Quantity
74LS138	3-Line to 8-Line Decoder/Demultiplexer	1	SO-16s	74LS138	1
24C02		2	SO-8	24C16	1
晶振		A1	CC0.254	JT	1
502	Potentiometer	AD1	WR2	POT2	1
+	Buzzer	BZ1	L101	BUZZER	1
	Capacitor	C2, C3, C4, C6, C7, CX1	0603	Cap	6
	Polarized Capacitor (Radial)	C5	CD4	Cap Pol1	1
Cap	Capacitor	C8, C11, C12, CC2, CC3, CC4, CC5, CV1	0603	Cap	8
Cap	Capacitor	C9	0805	Cap	1
Cap	Capacitor	C10	CD4	Cap	1
0.1uF	Capacitor	C32, C33	0603	CAP	2
1uF	Capacitor	C34	0805W	CAP	1
Cap104	Capacitor	C91, C93, C99, C100	0603	Cap	4
CH340G		CH1	SO-16s	CH340G	1
		CP1	CD5	CD	1
89C51	U	CPU1	ZIF40 - D	89C51	1
LED		D1, D2, D3, D4, D5, D6, D7, D8, D9, D10, D11, D12, D13, D14, D15, D16, DA1, DP1	LED0603	LED	18
		DD1	DIODE	D	1
DS1302		DS1	SO-8	DS1302	1
DS18B20		DS2	IR1	DS18B20	1
		DV1	D1808A	D	1
	Crystal	G1	RAD0.2	CRYSTAL	1
Header 2	Header, 2-Pin	GR1, NTC1	HDR1X2	Header 2	2
IR		IR1	IR1	IR	1
		ISP1	IDC10	HEADER 5X2	1
LCD1602		J2	SIP16	LCD1602	1
Lcd12864	Header, 20-Pin	J3	HDR1X20	Header 20	1
	Connector	J21, JOE	SIP3	CON3	2
Header 2	Header, 2-Pin	JP595	SIP2	Header 2	1
JZ-SW2		K1, K2, K3, K4, S1, S2, S3, S4, S5, S6, S7, S8, S9, S10, S11, S12, S13, S14, S15, S16	JZ-SW2	JZ-SW2	20
LED点阵		Led	Led点阵	Component_1	1
LED4		LED1, LED2	3.684 - D	LED4	2
NRF2401		NRF2401	HDR2X4	NRF2401	1
Header 20	Header, 20-Pin	P1, P2	HDR1X20	Header 20	2
Header 5	Header, 5-Pin	P3	HDR1X5	Header 5	1
Lcd12864	Header, 20-Pin	P10	SIP20	Header 20	1
JP4		P23		JP4	1
SW3-DP		POWER1	SW6	SW3-DP	1
8550		Q1	NPN-2TY	8550	1
470R	Resistor	R2, R54, R56	0603	Res2	3
10K	Resistor	R3, R7, R8, RQ1	0603	R, Res2	4
100K	Resistor	R4	0603	Res2	1
1K	Resistor	R6, R13, R14, R15, R16, R17	0603W	Res2	6
4.7K	Resistor	R9, R67	0603	Res2	2
330R	Resistor	R10, R60	0603	Res2	2
100R	Resistor	R11	0603	Res2	1
16K	Resistor	R12	0603	Res2	1
51K	Resistor	R62, R63	0603	Res2	2
103	Potentiometer	RJ1	WR2	POT2	1
继电器		RK1	Z1F	JDQ	1
100R		RP4, RP5	0603-4	RES4	2
1K		RP6, RP7, RP8, RP9	0603-4	RES4	4
10K		RP11, RP12, RP13, RP14, RP16, RP17, RP18	0603-4	RES4	7
KEY		RSTK1	JZ-SW2	JZ-SW2	1
8050		TP1	NPN-2TY	8050	1
XPT2046		U1	SSOP-16	ADS7843	1
74573		U2	SO20W	74573	1
74HC595	8-Bit Shift Register with 3-State Output Registers	U3	SO-16s	SN74HC595D	1
ULN2003D	Seven Darlington Array	U4	SO-16s	ULN2003D	1
LM358	Fast Settling Dual Operational Amplifier	U16	SO-8	LM358	1
USB_1		USB	USB2	USB_1	1
	Crystal	XTA	RAD-0.2	CRYSTAL	1