

U2

P5.3 1 QSPIIO3_2/PWM8_4/TxD4_2/P5.3

P1.5 2 I2SSD_2/QSPIIO0/PWM7_2/PWM3N/SCL_2/MOSI/ADC5/P1.5

P1.6 3 I2SMCLK_4/I2SMCLK_2/QSPIIO1/PWM4P/MISO/RxD_3/ADC6/P1.6

P1.7 4 I2SCK_2/QSPICLK/PWM8_2/PWM4N/SCLK/TxD_3/ADC7/P1.7

NRST 5 PWMAPS6_2/QSPINCS_3/ADC_ETR/MCLKO/nRST/P4.7

RXD 6 D-/RxD/INT4/P3.0

P4.3 7 I2SCK_4/QSPICLK_2/CCP1_2/SCLK_3/TxD2_2/RxD_4/P4.3

TXD 8 D+/TxD/P3.1

P3.2 9 I2SCK/PWM_ETI2/PWM_ETI1/SCL_4/SCLK_4/INT0/P3.2

P3.3 10 PWMAPS5/I2SMCLK/SDA_4/MISO_4/INT1/P3.3

P3.4 11 PWMAPS6/I2SSD/MOSI_4/T1CLKO/T0/P3.4

P3.5 12 I2SWS/PWMFLT/SS_4/T0CLKO/T1/P3.5

P3.6 13 P3.6/INT2/WR_2/RxD_2

P3.7 14 P3.7/INT3/RD_2/TxD_2

P5.6 15 P5.6/XTALO/MCLKO_2/PWMAPS5_3

P5.7 16 P5.7/XTALI/PWMAPS6_3

GND 17 Gnd/ADC_AGnd/ADC_Vref-

P4.0 18 P4.0/SS_3/ADCETR_2/QSPINCS_2/I2SWS_4

P2.0 19 P2.0/A8/T11/CCP0_3/PWM1P_3/ADCETR_3/I2SWS_3

P2.1 20 P2.1/A9/T11CLKO/CCP1_3/PWM1N_3/PWM5_3/I2SSD_3

P2.2 21 P2.2/A10/CCP2_3/PWM2P_3/I2SMCLK_3

P2.3 22 P2.3/A11/SDA/ECI_3/PWM2N_3/PWM6_3/PWM_ETI1_3/PWM_ETI2_3/I2SCK_3

P2.4 23 P2.4/A12/SS_2/SCL/PWM3P_3

P5.0 24 P5.0/RxD3_2/PWM5_4/CMP+_2

QSPIIO2_2/PWM7_4/RxD4_2/P5.2

I2SWS_2/QSPINCS/PWM3P/CCP1/SDA_2/SS/ADC4/P1.4

QSPIIO2/PWM6_2/PWM2N/CCP0/TxD2/ADC3/P1.3

QSPIIO3/PWMETI2_4/PWMETI1_4/PWM2P/ECI/RxD2/ADC2/P1.2

PWM5_2/PWM1N/CCP2/T2CLKO/ADC1/P1.1

PWM1P/T2/ADC0/P1.0

QSPIIO1_2/CCP0_2/MISO_3/RxD2_2/WR/P4.2

ADC_VRef+/ADC_AVcc/Vcc

PWM1P_2/RxD3/AD0/ADC8/P0.0

PWM5/PWM1N_2/TxD3/AD1/ADC9/P0.1

PWM2P_2/RxD4/AD2/ADC10/P0.2

PWM6/PWM2N_2/TxD4/AD3/ADC11/P0.3

P0.4/ADC12/AD4/T3/PWM3P_2

P0.5/ADC13/AD5/T3CLKO/PWM3N_2/PWM7

P0.6/ADC14/AD6/T4/PWM4P_2/PWMFLT_2

P0.7/AD7/T4CLKO/PWM4N_2/PWM8/PWMFLT_3

P4.6/CMP+/QSPIIO2_3

P4.1/CMPO_2/ECI_2/MOSI_3/PWMETI1_2/PWMETI2_2/QSPIIO0_2/I2SSD_4

P4.5/ALE/CMPO/QSPIIO3_3/P4.4/RD/TxD_4/CCP2_2/PWMAPS5_2/CMP-

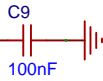
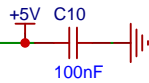
UCAP

P2.7/A15/SCLK_2/PWM4N_3/PWM8_3/QSPICLK_3

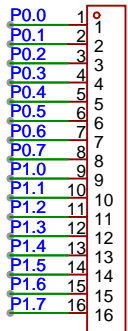
P2.6/A14/MISO_2/PWM4P_3/QSPIIO1_3

P2.5/A13/MOSI_2/PWM3N_3/PWM7_3/QSPIIO0_3

P5.1/TxD3_2/PWM6_4/CMP+_3

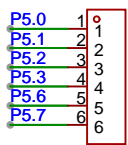
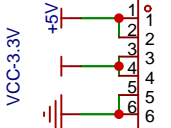
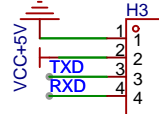
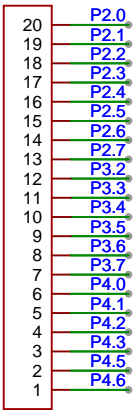


AI8051U-34K64-QFP48



H4

H2



H5

原理图	Schematic1	更新日期	2024-11-03
		创建日期	2024-10-30
图页	ai8051u芯片	物料编码	
绘制	ai8051u-4层		
审阅			
	版本	尺寸	页 1 共 2
嘉立创EDA		V1.0	A4
嘉立创EDA			

