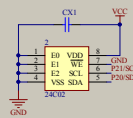


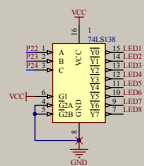
## EEPROM



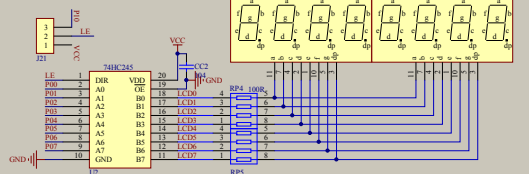
## 无线接口



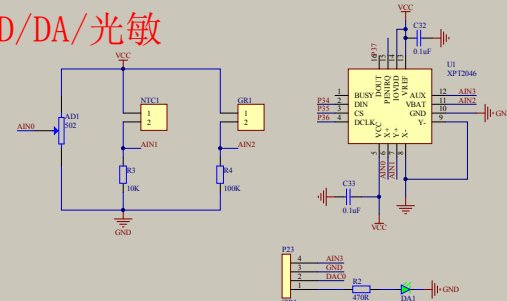
## 138译码器



## 数码管



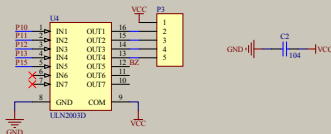
## AD/DA/光敏



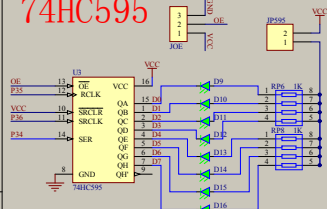
## LED点阵



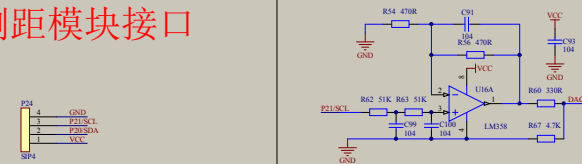
## 五项四线步进电机



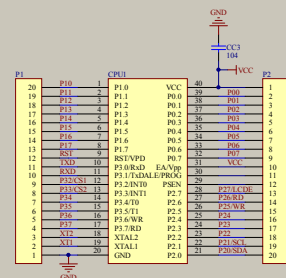
## 74HC595



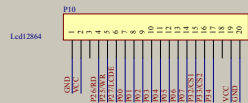
## 超声波测距模块接口



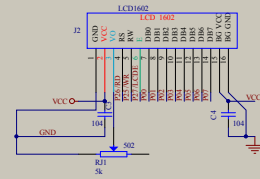
## MCU



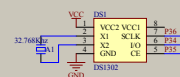
## Lcd12864



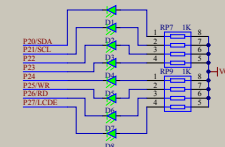
## Lcd1602



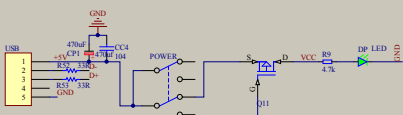
## DS1302



## LED模块



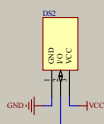
## USB自动下载电路



## 蜂鸣器



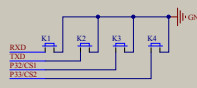
## 温度



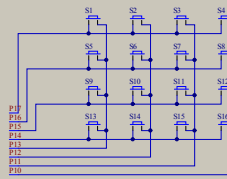
## 红外



## 独立按键



## 矩阵按键



文件名: HC6800-ES\_V2.0原理图  
尺寸: 公司名: 深圳普中科技有限公司  
作者: 甘 完成时间: 13-5-25

Comment	Description	Designator	Footprint	LibRef	Quantity
74LS138	3-Line to 8-Line Decoder/Demultiplexer	1	SO-16s	74LS138	1
24C02		2	SO-8	24C16	1
晶振32.768khz		A1	CC0.254	JT	1
5k电位器	Potentiometer	AD1, RJ1	WR2	POT2	2
蜂鸣器	Buzzer	BZ1	L101	BUZZER	1
104电容	Capacitor	C2, C3, C4, C91, C93, C99, C100, CC2, CC3, CC4, CC5, CX1	0603	Cap	12
10uf	Polarized Capacitor (Radial)	C5	CD4	Cap Pol1	1
33p	Capacitor	C6, C7	0603	CAP	2
22uf	Capacitor	C9	0805W	Cap	1
22p	Capacitor	C11, C12	0603	Cap	2
0.1uF	Capacitor	C32, C33	0603	CAP	2
CH340G		CH340	SOP-16	CH340G	1
470uf		CP1	CD5	CD	1
89C51	U	CPU1	89C51-V2.0	89C51	1
103电容	Capacitor	CV1	0603	Cap	1
LED		D1, D2, D3, D4, D5, D6, D7, D8, D9, D10, D11, D12, D13, D14, D15, D16, DA1, DP	LED0603	LED	18
DS1302		DS1	SO-8	DS1302	1
DS18B20		DS2	IR1	DS18B20	1
INA148		DV1	D1808A	D	1
热敏电阻	Header, 2-Pin	GR1	HDR1X2	Header 2	1
IR红外		IR1	IR1	IR	1
SIP5*2		ISP1	IDC10	HEADER 5X2	1
LCD1602		J2	SIP16	LCD1602	1
SIP3	Connector	J21, JOE	SIP3	CON3	2
SIP2	Header, 2-Pin	JP595	SIP2	Header 2	1
按键		K1, K2, K3, K4, RSTK1, S1, S2, S3, S4, S6, S6, S7, S8, S9, S10, S11, S12, S13, S14, S15, S16	JZ-SW2	JZ-SW2	21
共阴数码管		LED1, LED2	3.684 - D	LED4	2
LED点阵		LED_1	LED_1	LED_1	1
NRF2401		NRF2401	HDR2X4	NRF2401	1
光敏电阻	Header, 2-Pin	NTC1	HDR1X2	Header 2	1
SIP20	Header, 20-Pin	P1, P2	HDR1X20	Header 20	2
SIP5	Header, 5-Pin	P3	HDR1X5	Header 5	1
Lcd12864	Header, 20-Pin	P10	SIP20	Header 20	1
SIP4		P23		JP4	1
SIP4		P24	SIP4	JP4	1
自锁开关		POWER	SW6	SW3-DP	1
2TY		Q1	NPN-2TY	8550	1
MOS-P		Q11	Q11_0	MOS-P	1
470R	Resistor	R2, R54, R56	0603	Res2	3
10K	Resistor	R3, R7, R8, RQ1	0603	R, Res2	4
100K	Resistor	R4	0603	Res2	1
1K	Resistor	R6, R13, R14, R15, R16, R17	0603W	Res2	6
4.7k	Resistor	R9, R67	0603	R, Res2	2
330R	Resistor	R10, R60	0603	Res2	2
100R	Resistor	R11	0603	Res2	1
47k	Resistor	R12	0603	Res2	1
33R	Resistor	R52, R53	0603	Res1	2
51K	Resistor	R62, R63	0603	Res2	2
100R排阻		RP4, RP5	0603-4	RES4	2
1K排阻		RP6, RP7, RP8, RP9	0603-4	RES4	4
10K排阻		RP11, RP12, RP13, RP14, RP16, RP17, RP18	0603-4	RES4	7
XPT2046		U1	QFN16_XPT2046	ET2046	1
74HC245		U2	SOP20(74HC245) - duplicate	74HC245	1
74HC595	8-Bit Shift Register with 3-State Output Registers	U3	SO-16s	SN74HC595D	1
ULN2003D	Seven Darlington Array	U4	SO-16s	ULN2003D	1
LM358	Fast Settling Dual Operational Amplifier	U16	SO-8	LM358	1
Header 5	Header, 5-Pin	USB	MiniUSB	Header 5	1
12M晶振	Crystal	XTA	RAD-0.2	CRYSTAL	1
12M晶振	Crystal	XTAL1	晶振	CRYSTAL	1