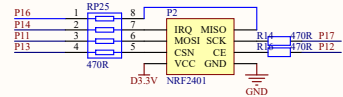
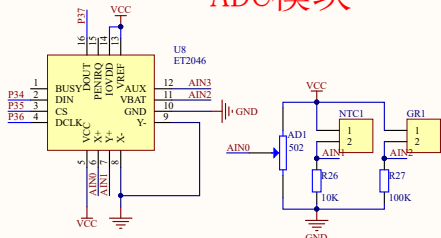


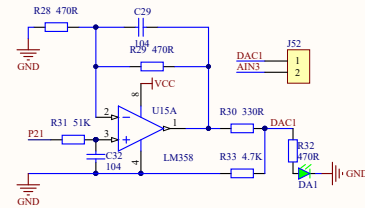
NRF24L01接口



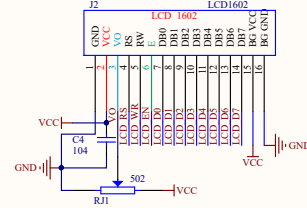
ADC模块



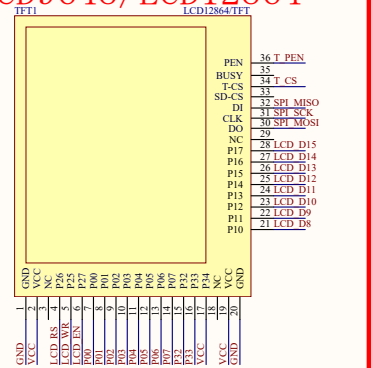
DAC (PWM) 模块



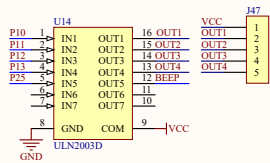
LCD1602接口



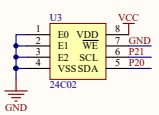
LCD9648/LCD12864



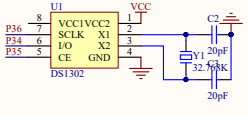
五线四项步进电机



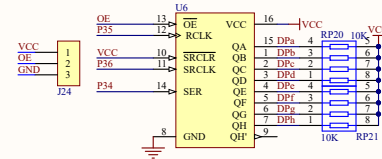
EEPROM模块



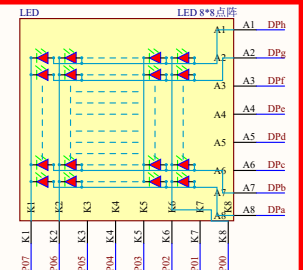
DS1302时钟模块



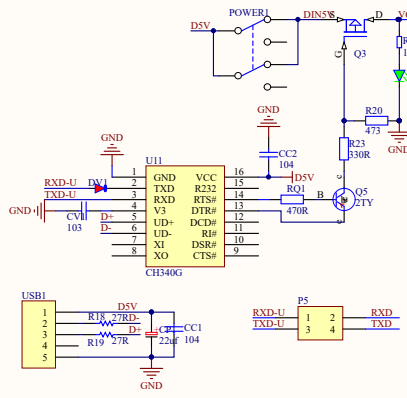
74HC595(串转并)模块



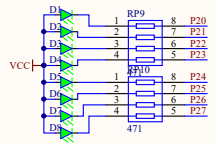
8*8LED点阵模块



USB转TTL下载模块



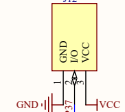
LED模块



蜂鸣器



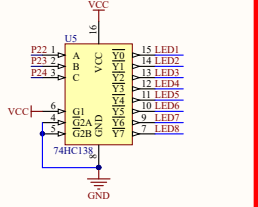
DS18B20



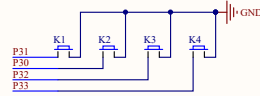
红外接收模块



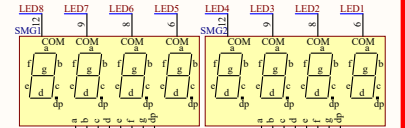
74HC138译码器



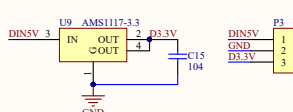
独立按键模块



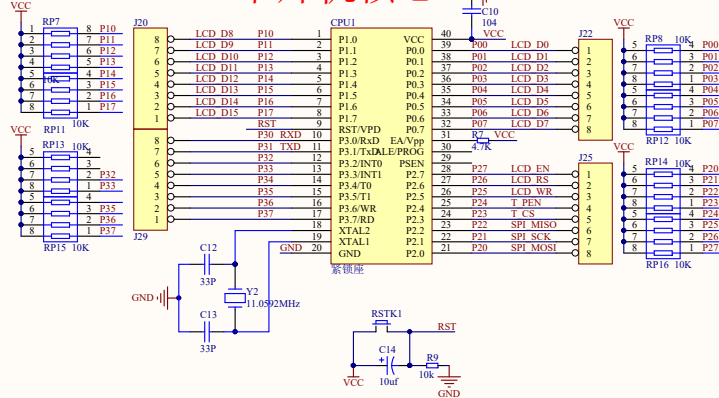
动态数码管模块



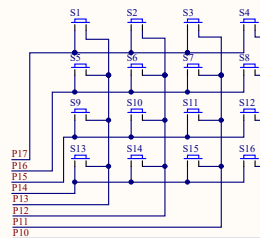
DC5V-->3.3V电源模块



单片机核心



矩阵按键模块



Title	Number	Revision
A2		
Date: 2023/8/28	Sheet of	Revision
File: J-MRZY_ Sheet1_SchDoc	Sheet of	Revision
	Drawn By:	