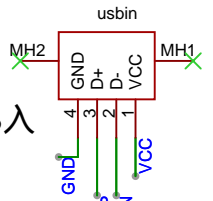
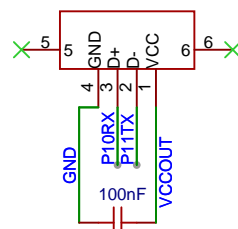


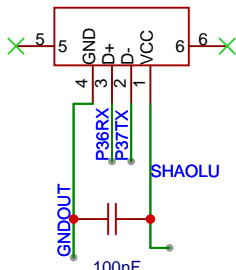
USB入



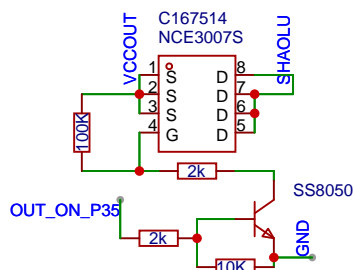
USB-MCU通信



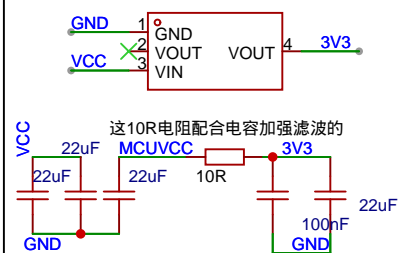
烧录



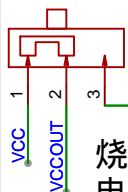
大电流开关管



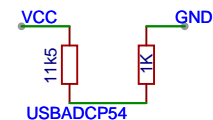
稳压与滤波



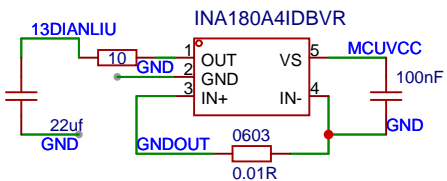
烧录/通信电压切换



电压

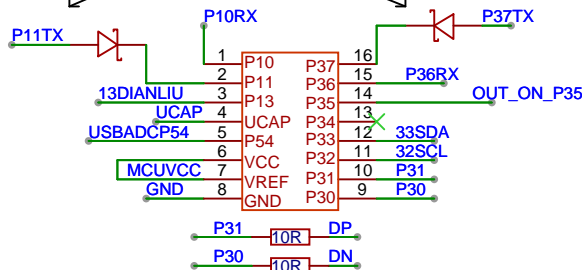


电流



二极管可省直接短

1N5819WS

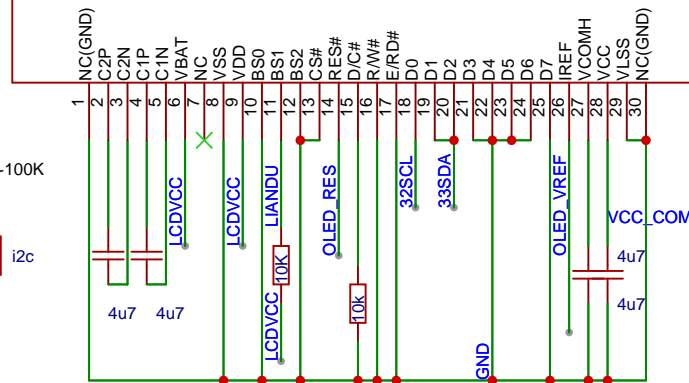
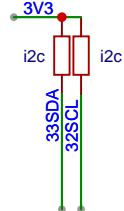


13电流/54vusb

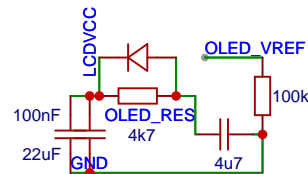
32sck/33sda/35out/uart36-37/uart10-11

128 x 64

电阻4.7K~100K



30PIN通用OLED屏



除0.01R电阻一定要大于等于0603封装，其他电阻可以自己放自己能焊的封装，