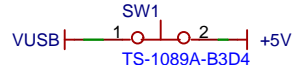
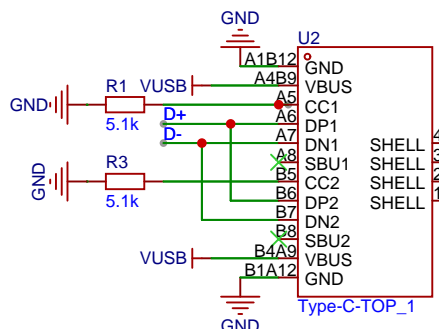


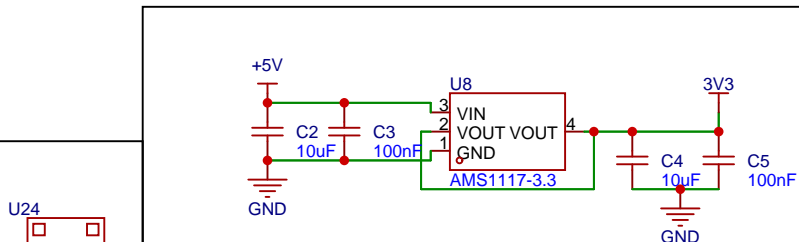
程序下载按键



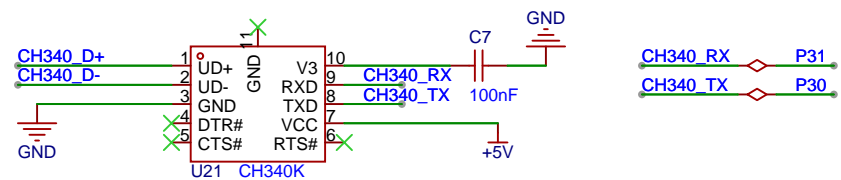
总电源常闭开关



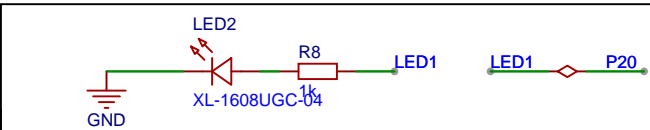
USB接口Type-C



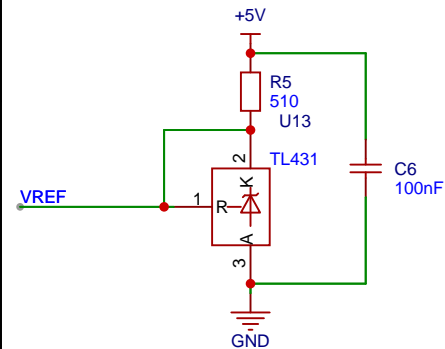
5V转3.3V



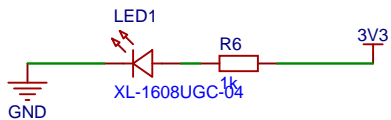
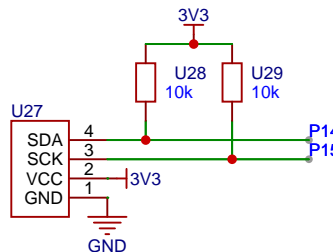
USB转串口电路CH340K



可编程LED灯



参考电压VREF



电源指示灯

原理图	Schematic1		更新日期	2024-09-21
图页	P1		创建日期	2024-09-21
绘制			物料编码	
审阅				
		版本	尺寸	页 1 共 1
嘉立创EDA		V1.0	A4	嘉立创EDA