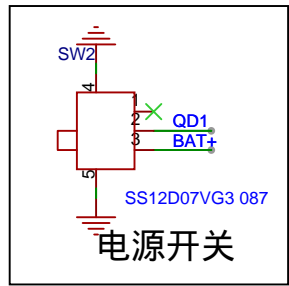
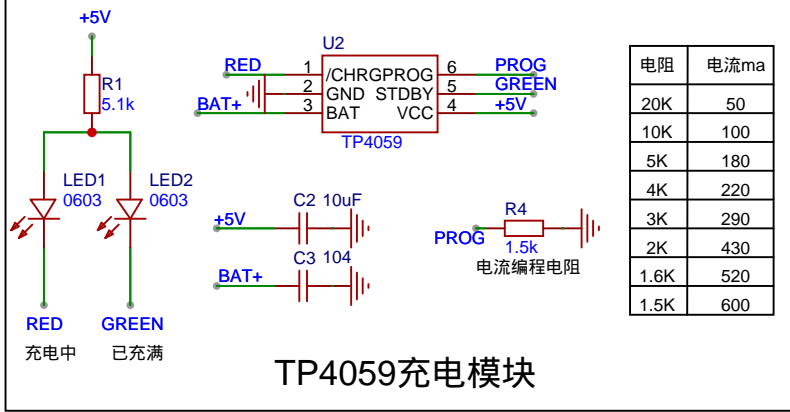
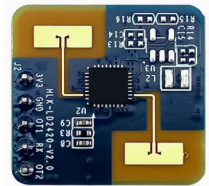
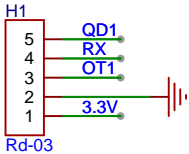
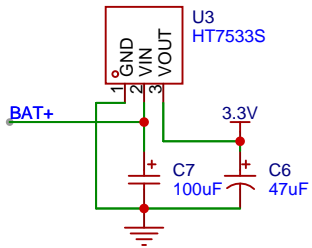


USB输入

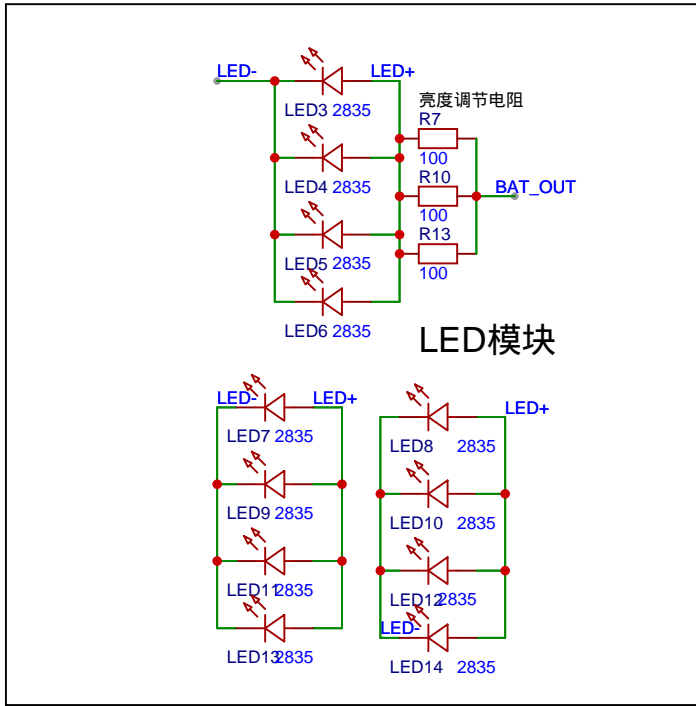


电源开关

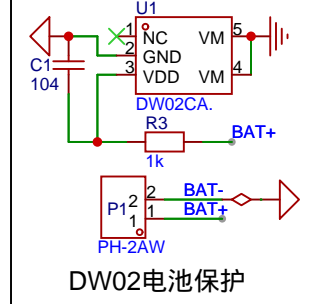


TP4059充电模块

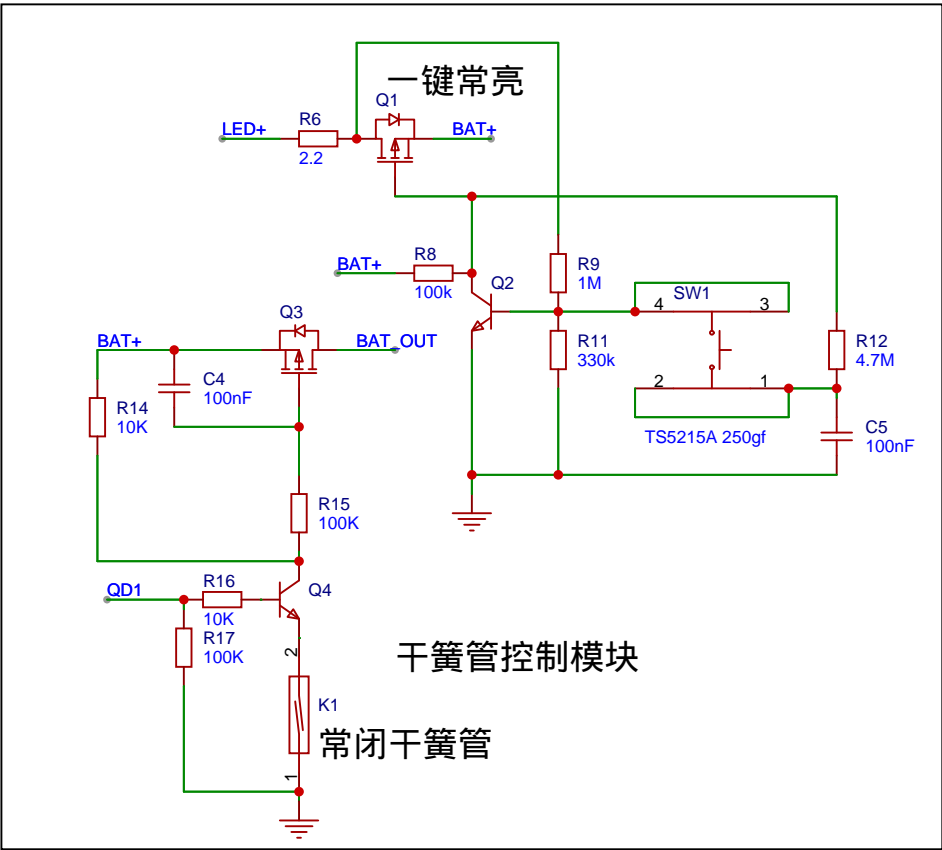
电阻	电流ma
20K	50
10K	100
5K	180
4K	220
3K	290
2K	430
1.6K	520
1.5K	600



LED模块



DW02电池保护



干簧管控制模块

Schematic	橱柜开门自动感应灯			Update Date	2024-09-21
				Create Date	2024-09-21
Page	P1			Part Number	
Drawed		橱柜开门自动感应灯			
Reviewed					
		VER	SIZE	PAGE	1 OF 1
			A4	嘉立创EDA	