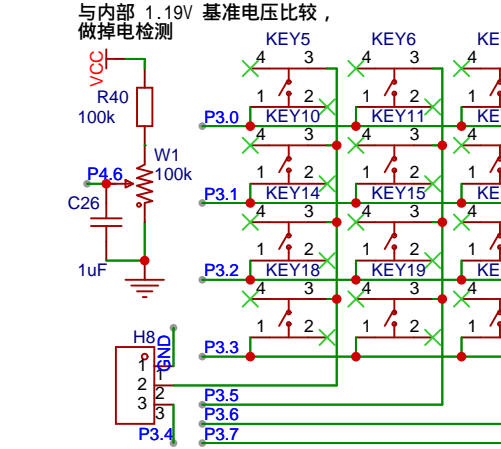
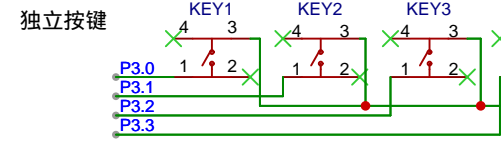
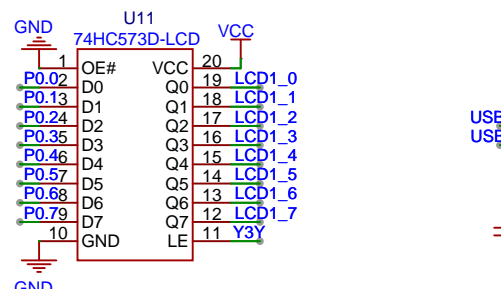
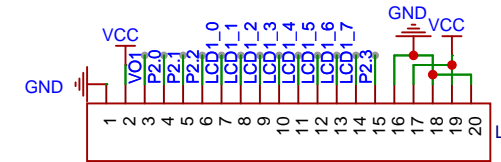
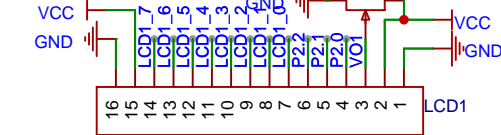
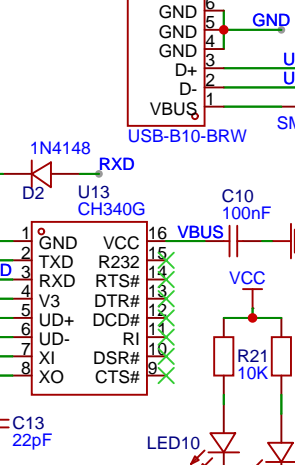
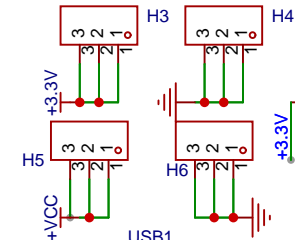


LCD1602/12864

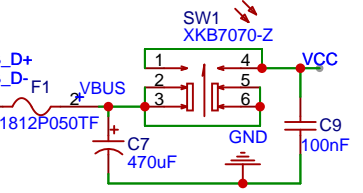
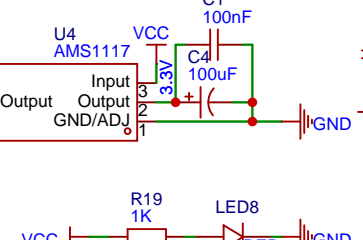


独立按键

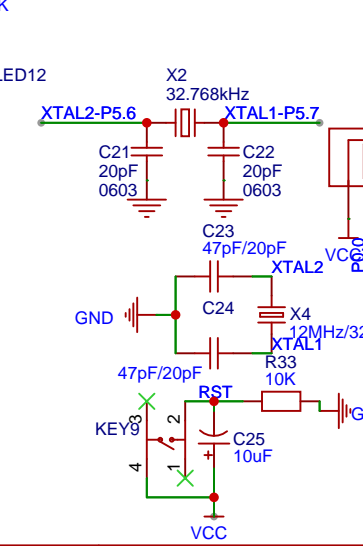
矩阵键盘



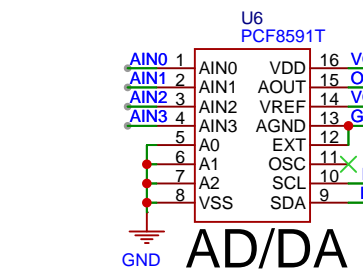
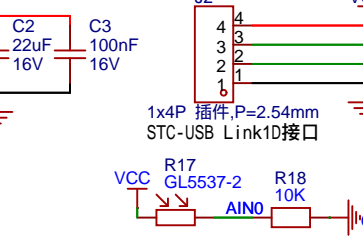
USB转TTL



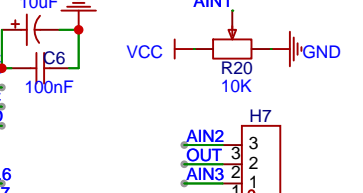
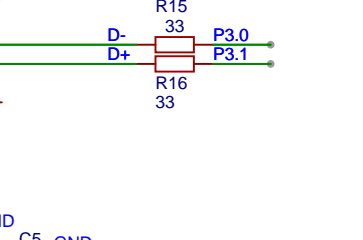
供电模块



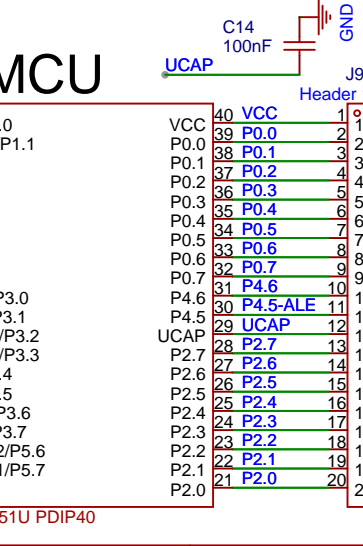
最小系统



AD/DA

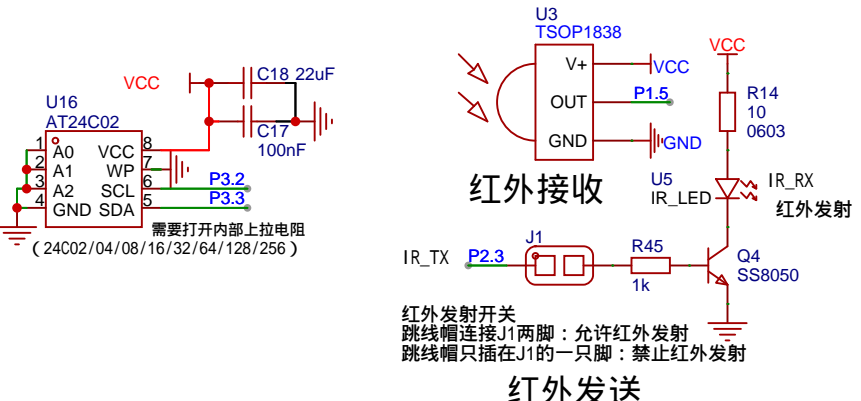
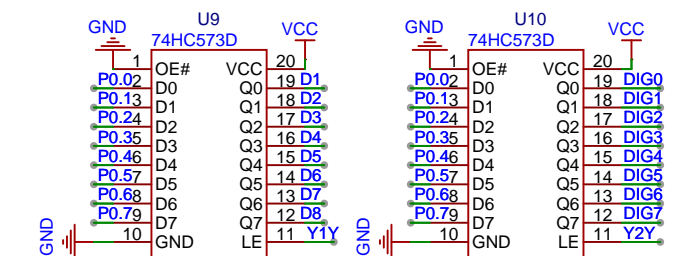
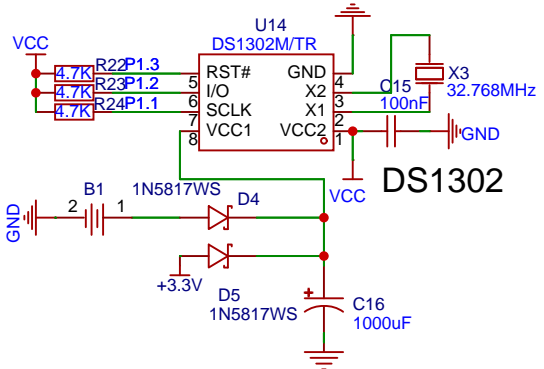
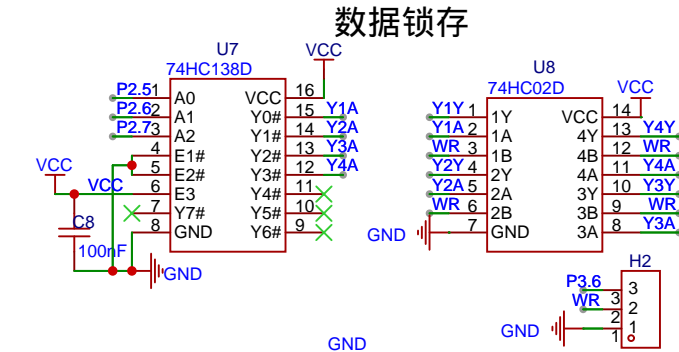
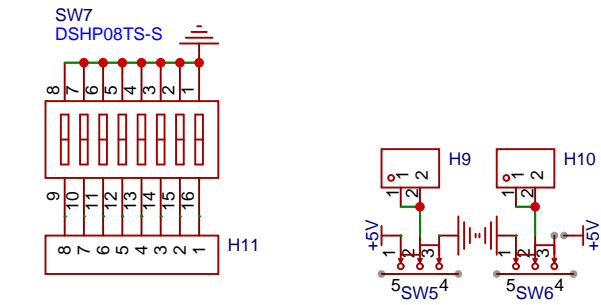
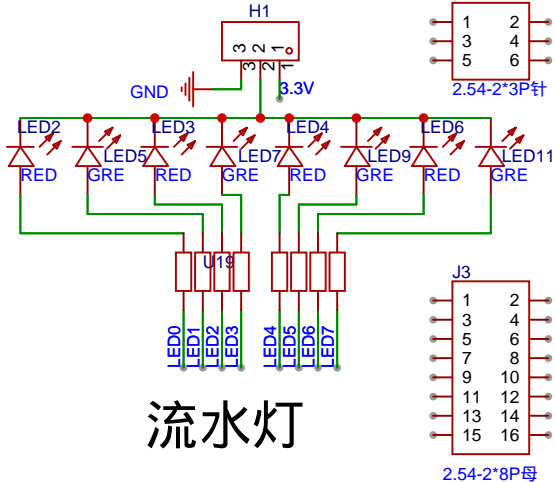
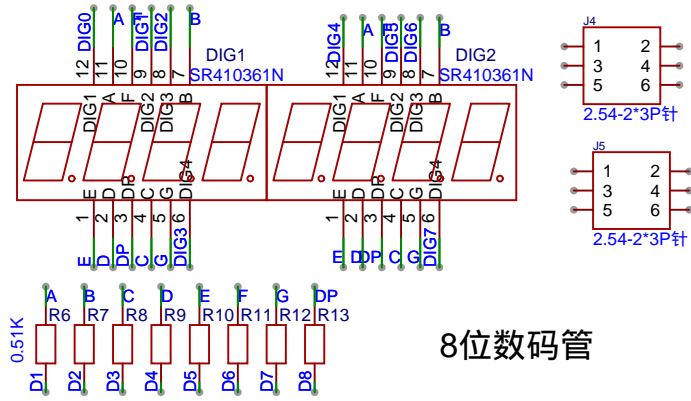
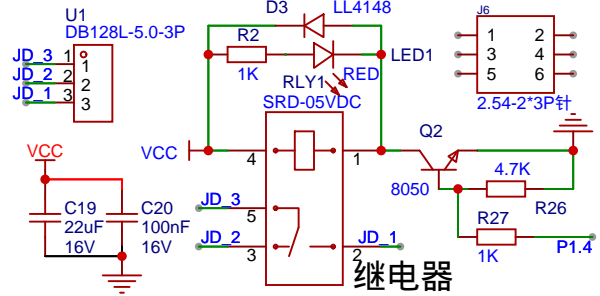
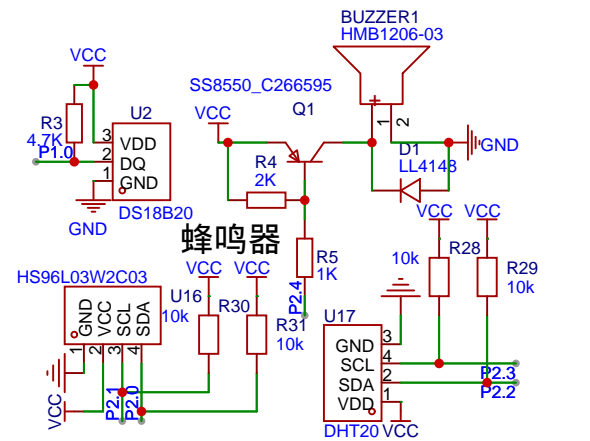


MCU



MCU

原理图	STC8051U单片机学习开发板		更新日期	2024-08-07
图页	STC8051U单片机学习开发板01		创建日期	2024-07-18
绘制			物料编码	
审阅			STC8051U单片机学习开发板	
		版本	尺寸	页 1 共 2
		V1.0	A3	嘉立创EDA



原理图	STC8051U单片机学习开发板			更新日期	2024-08-07
				创建日期	2024-08-07
图页	STC8051U单片机学习开发板02			物料编码	
绘制		STC8051U单片机学习开发板			
审阅					
		版本	尺寸	页	2 共 2
		V1.0	A3	嘉立创EDA	