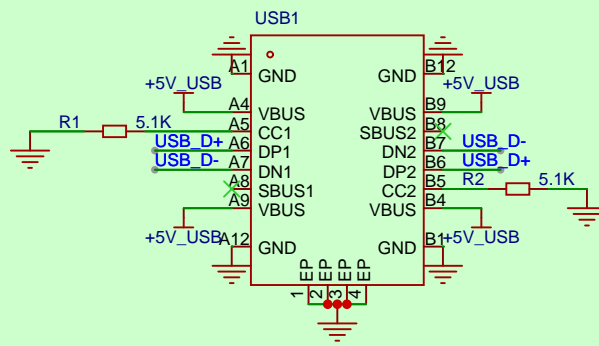
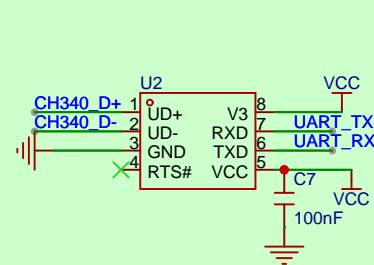


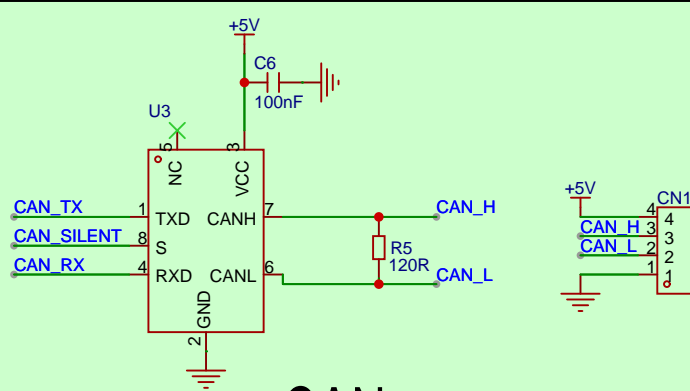
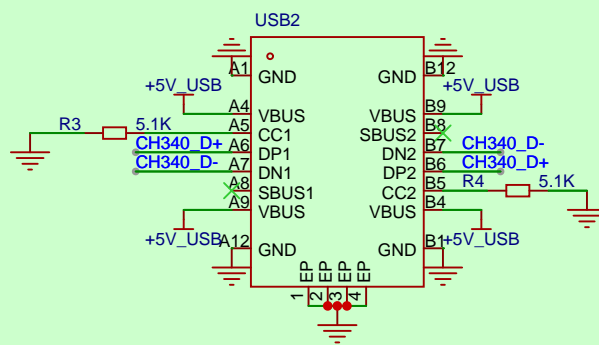
MCU



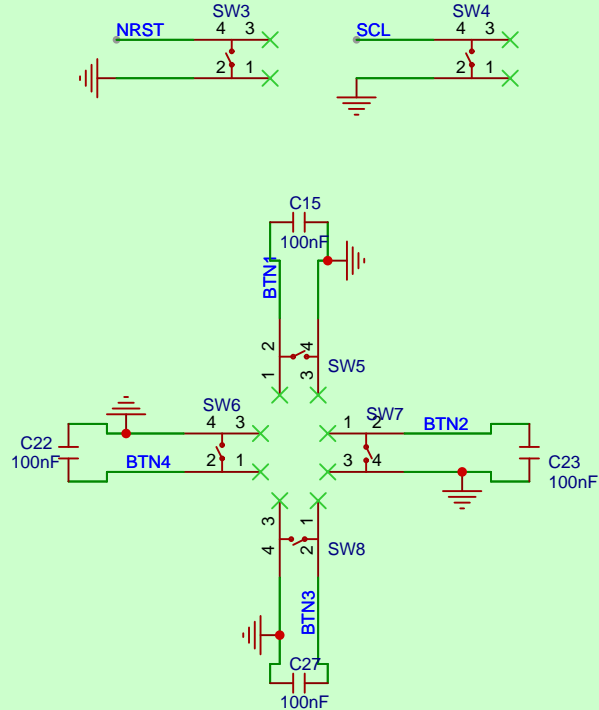
USB



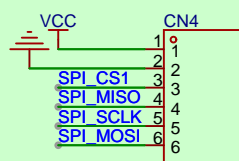
UART-USB



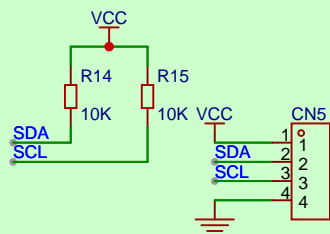
CAN



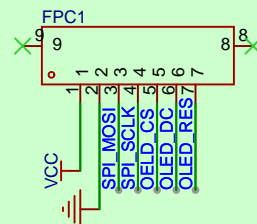
按键



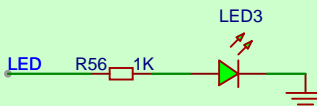
SPI接口



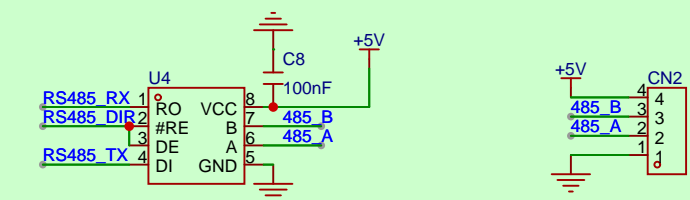
I2C接口



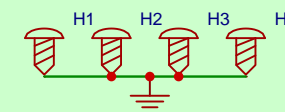
OLED



LED

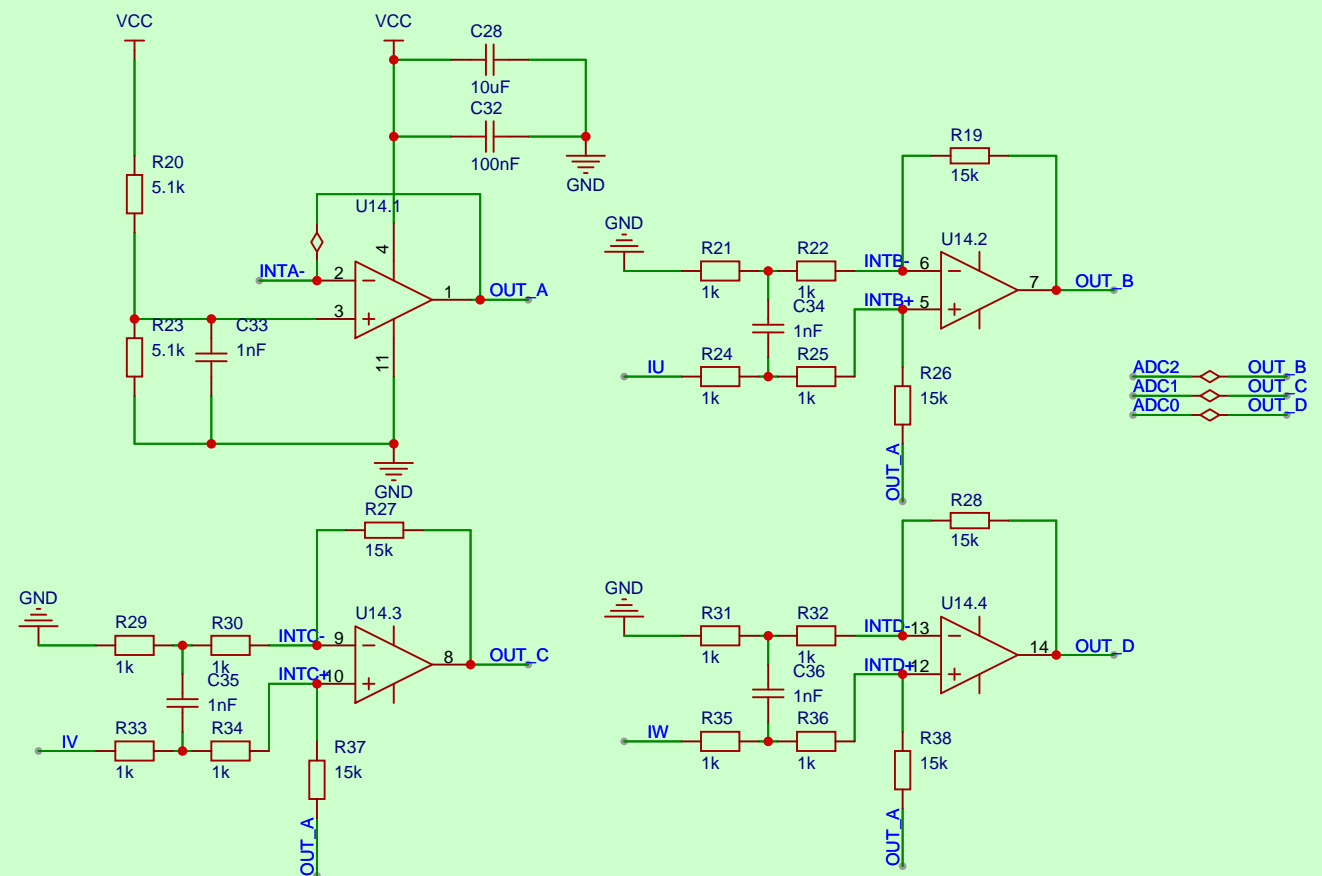


RS485



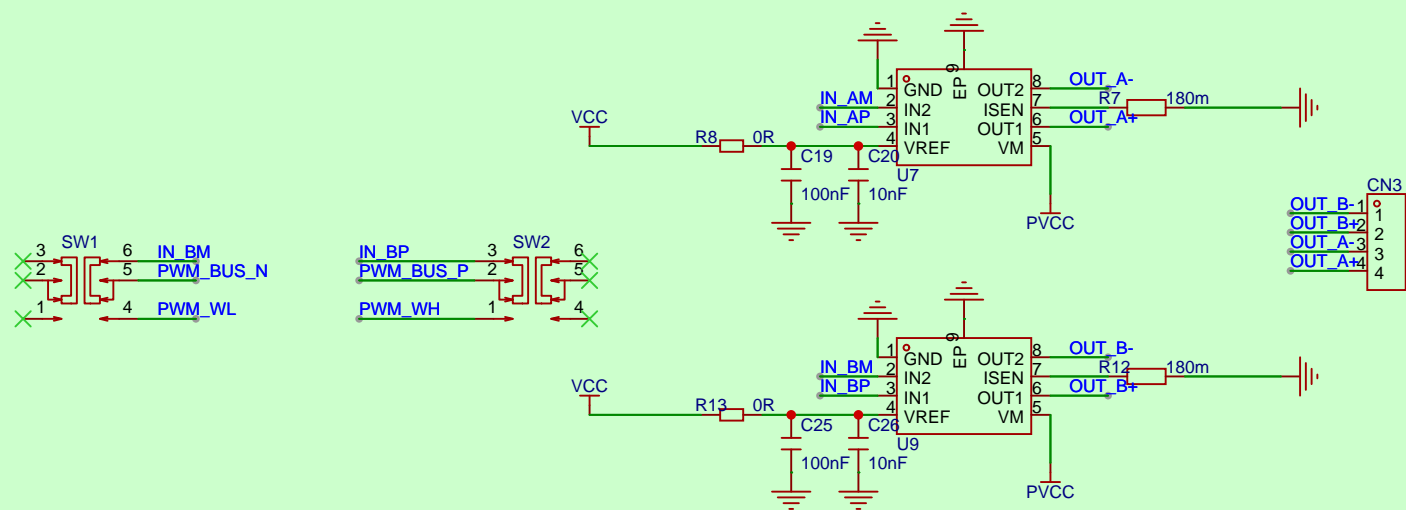
M3螺丝孔

原理图		Schematic1		更新日期		2024-07-04	
				创建日期		2024-06-17	
图页		MCU		物料编码		01	
绘制		Ary_Ye_林晓堰		STC电机开发板			
审阅		Ary_Ye_林晓堰					
		版本	尺寸	页 1 共 3			
嘉立创EDA		V1.0	A2	GXU广西大学			

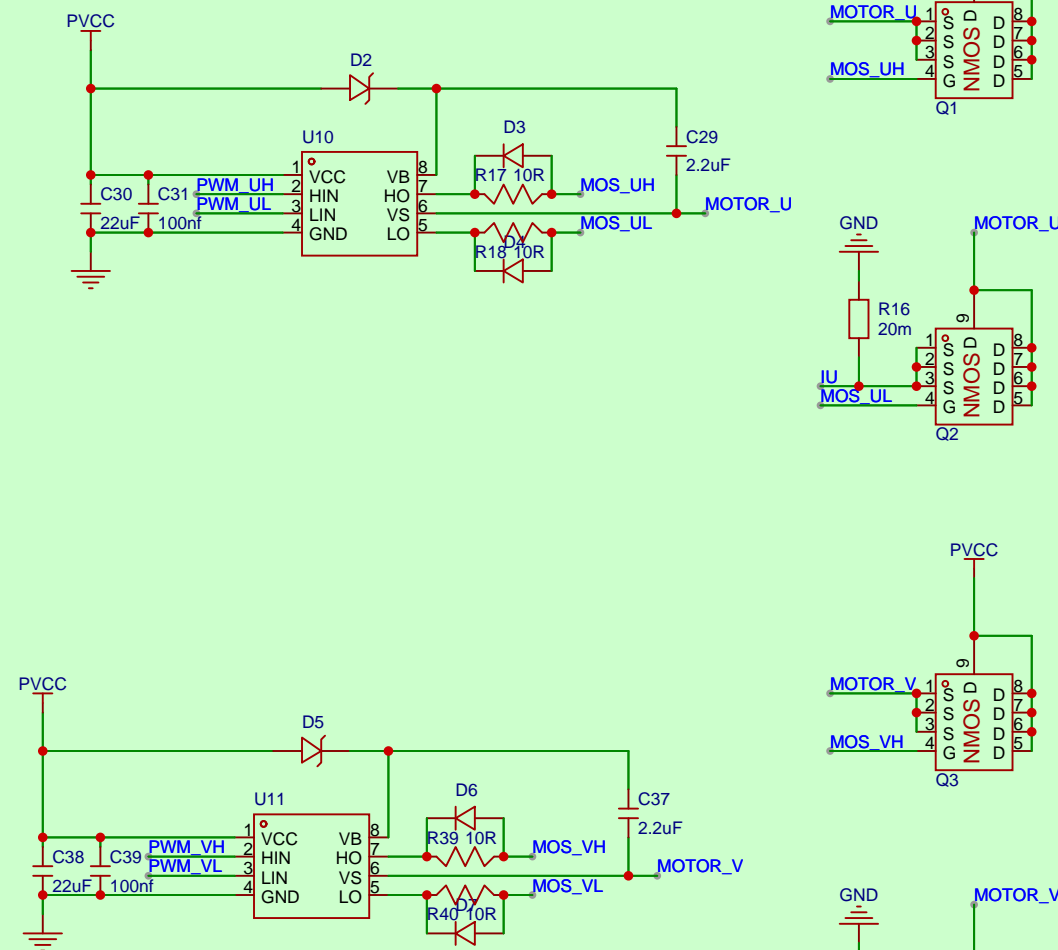


可用COS724SR

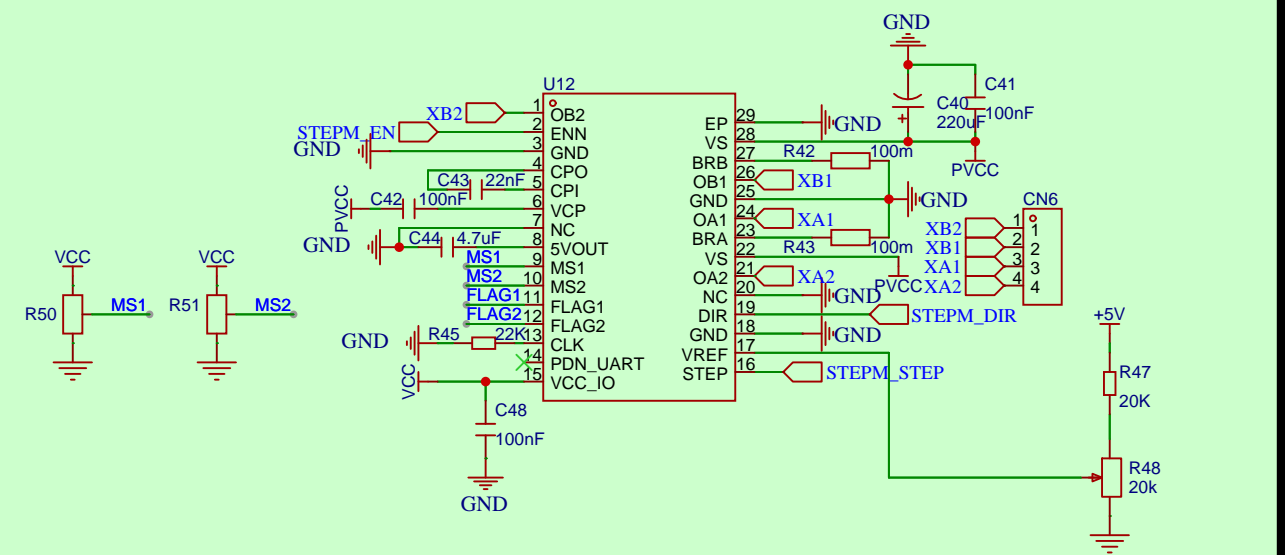
### 三相电流采集



### H桥

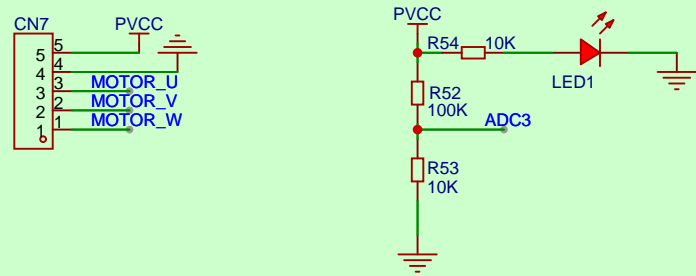


### BLDC

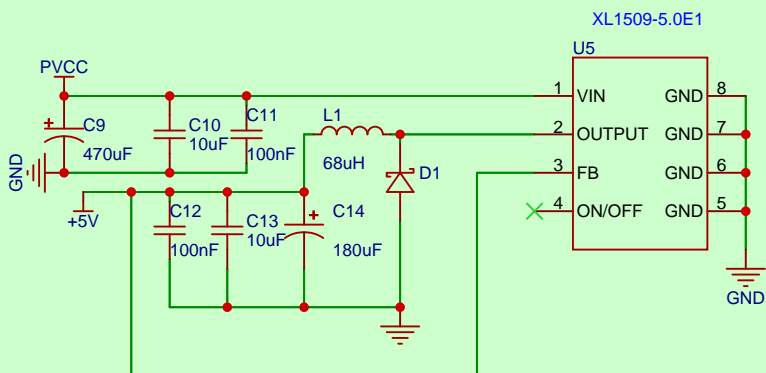


### 步进电机

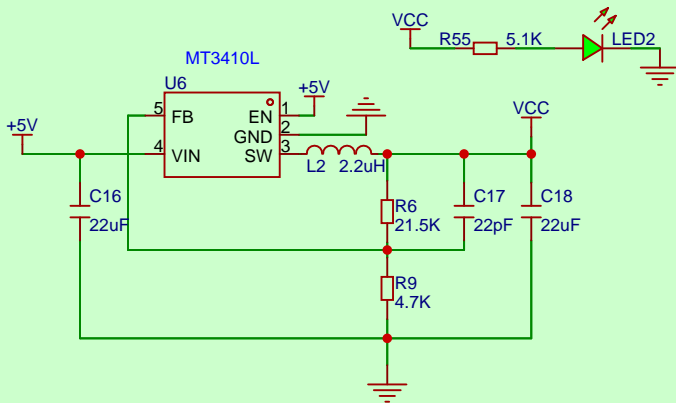
原理图		Schematic1		更新日期	2024-07-04
图页		MOTOR		创建日期	2024-06-18
绘制	Ary_Ye_林晓堰	STC电机开发板			
审阅	Ary_Ye_林晓堰				
		版本	尺寸	页	2 共 3
嘉立创EDA		V1.0	A2	GXU广西大学	



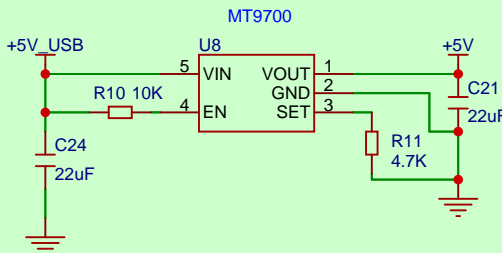
电源接口



5v输出



MCU供电



USB可调节限流

原理图	Schematic1		更新日期	2024-07-04
			创建日期	2024-06-18
图页	PWR		物料编码	01
绘制	Ary_Ye_林晓堰	STC电机开发板		
审阅	Ary_Ye_林晓堰			
		版本	尺寸	页 3 共 3
嘉立创EDA		V1.0	A2	GXU广西大学