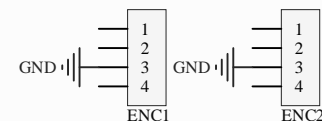
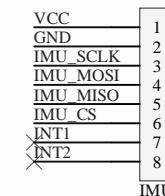
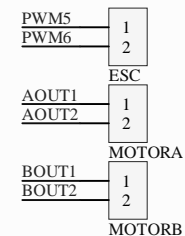


表 7-5. 衰减模式设置

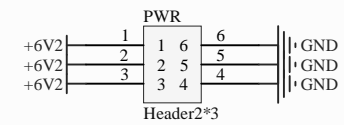
xDECAY	衰减模式
0	智能调优动态衰减
1	智能调优动态控制
高阻态	联合衰减快 30%
330k 至 GND	快速衰减


表 7-4. 关断时间设置

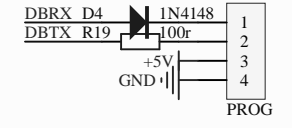
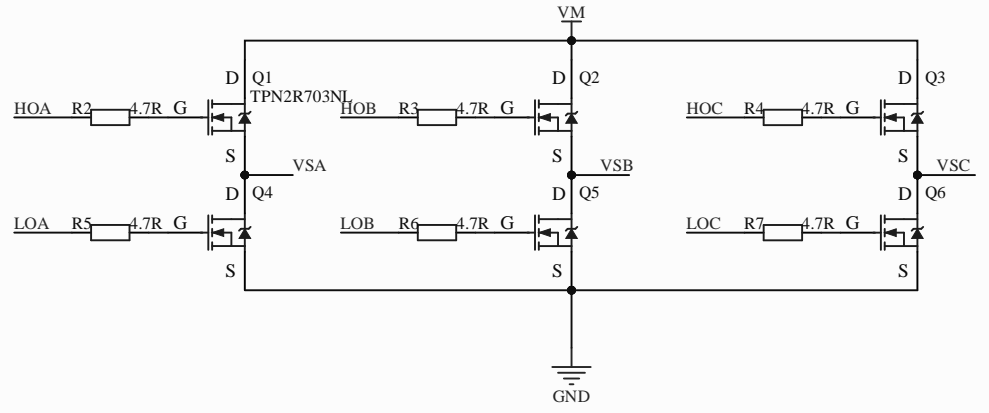
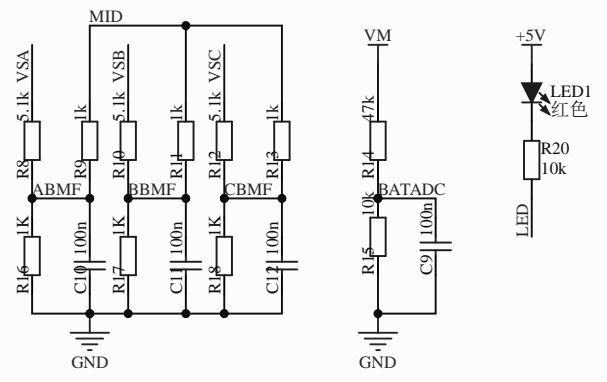
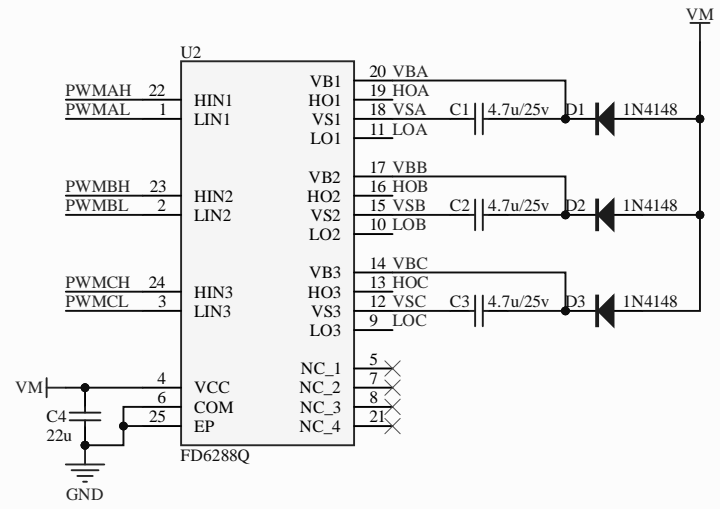
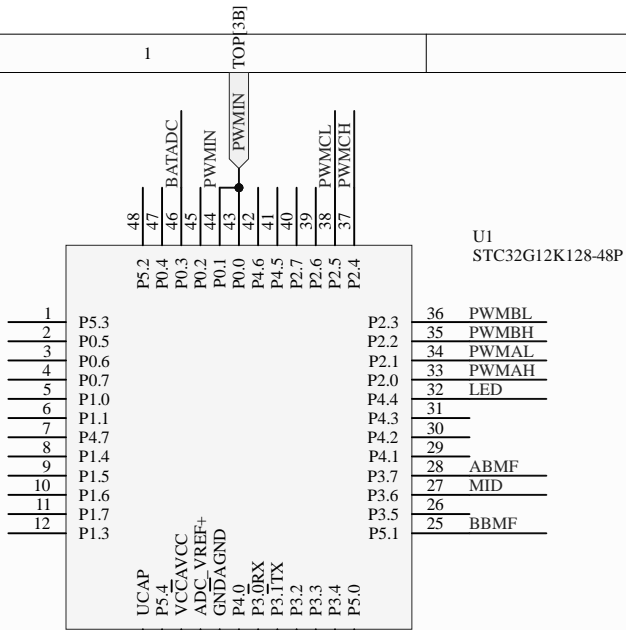
TOFF	关断时间 t <sub>off</sub>
0	7us
1	16us
高阻态	24us
330k 至 GND	32us



Title: DRV		#SMU Intelligent Car Lab	
Drawn by:	li		
Date:	2023/7/21		
Rev: *	Page: 1 OF 2		



Title: PMU		
Drawn by: li		
Date: 2023/7/21		
Rev: *	Page: 2 OF 2	



A

B

C

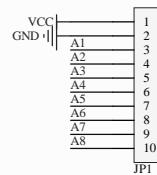
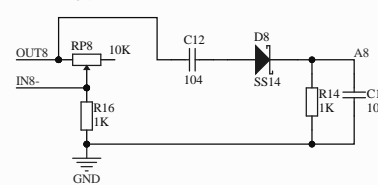
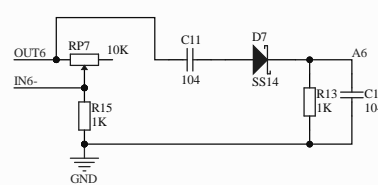
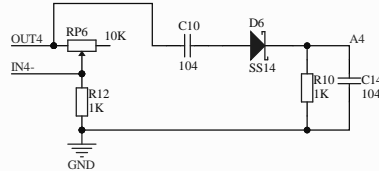
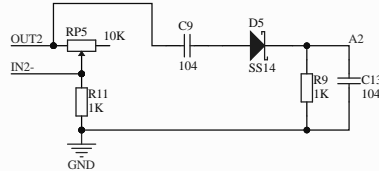
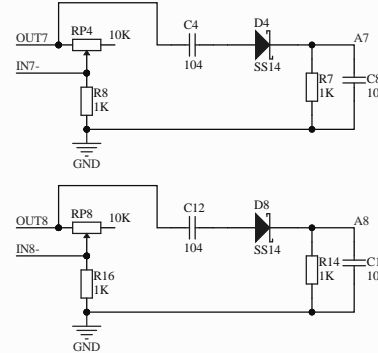
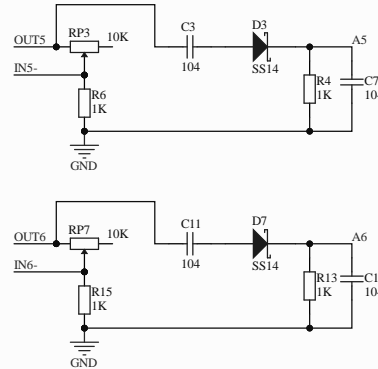
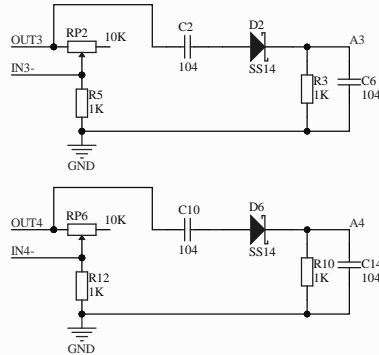
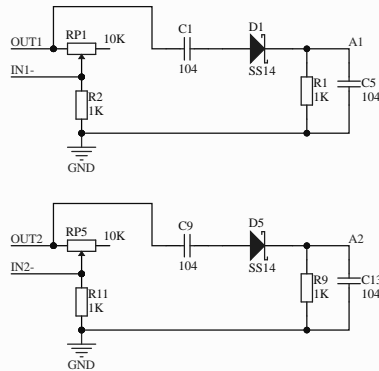
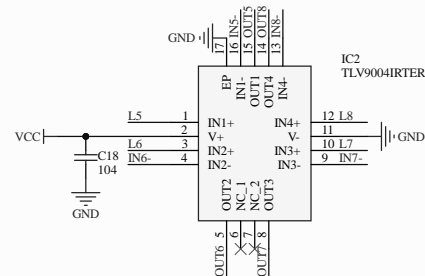
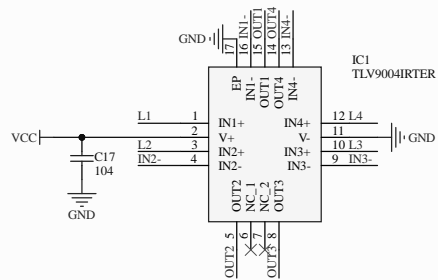
D

A

B

C

D



Title: INDUCTOR

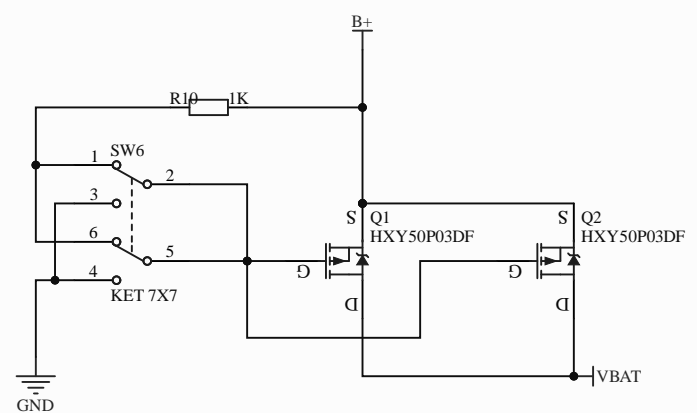
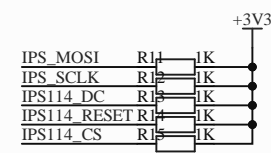
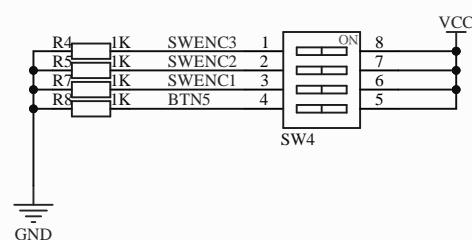
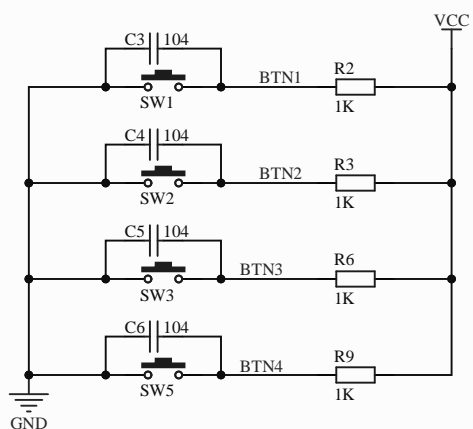
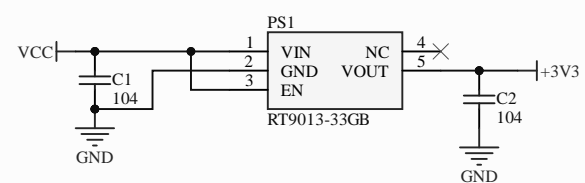
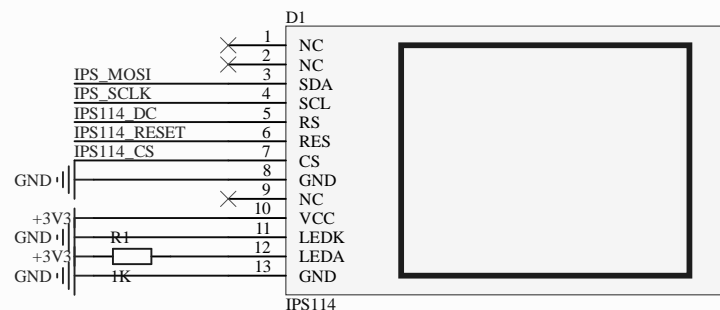
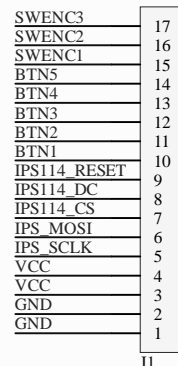
Drawn by: li

Date: 2023/7/21

Rev: \*

Page: 1 OF 1

#SMU Intelligent Car Lab



Title: HMI	
Drawn by: li	<b>#SMU</b> Intelligent Car Lab
Date: 2023/7/21	
Rev: * Page: 1 OF 1	