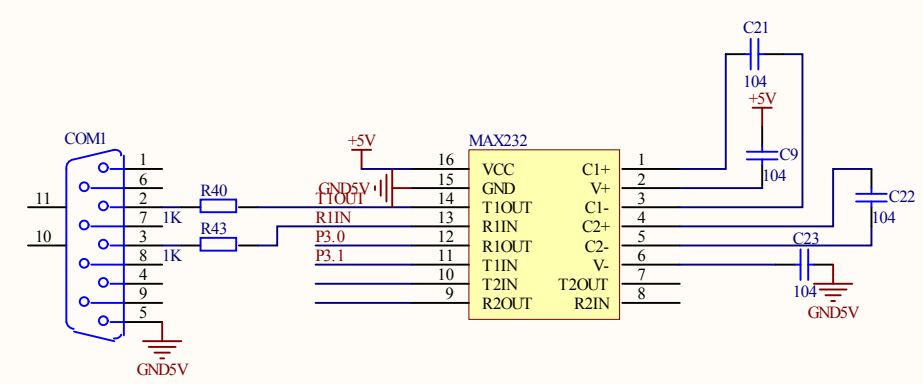
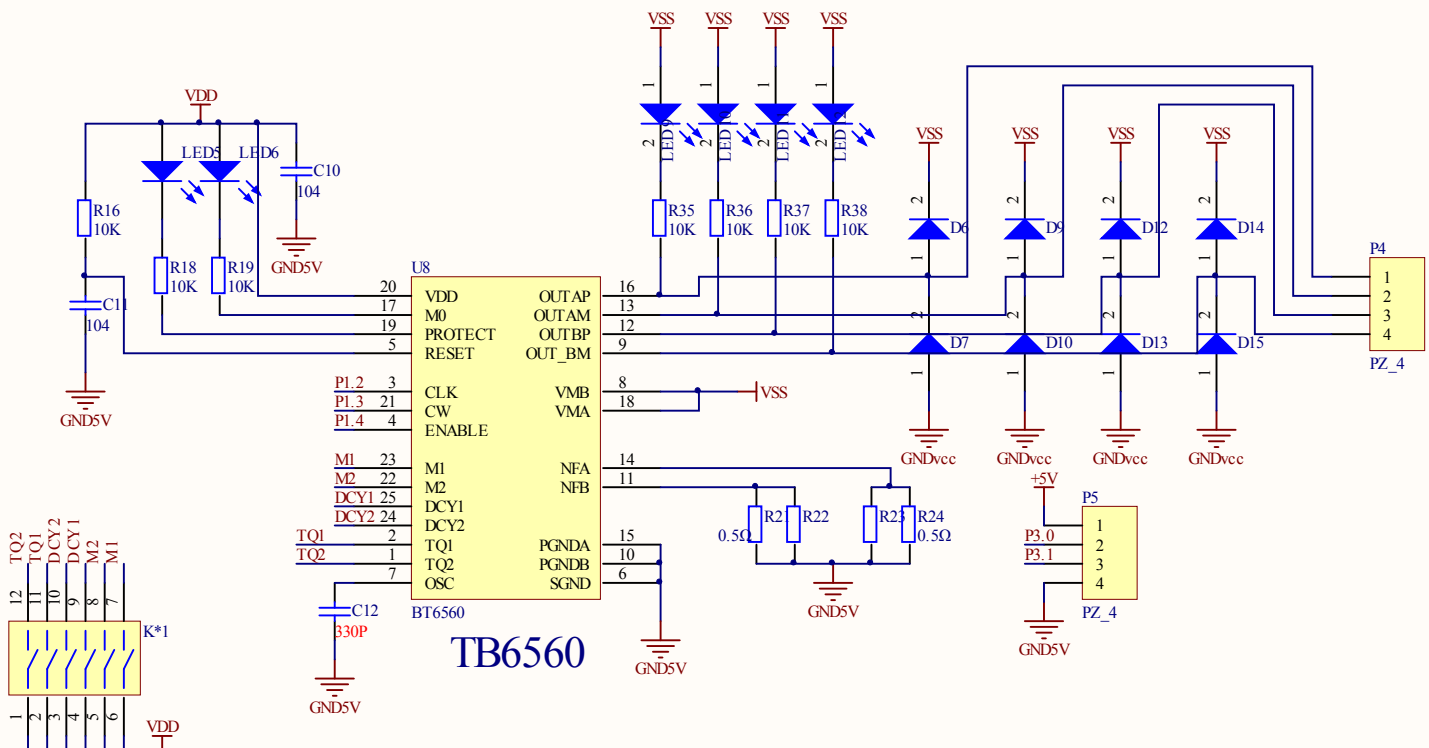
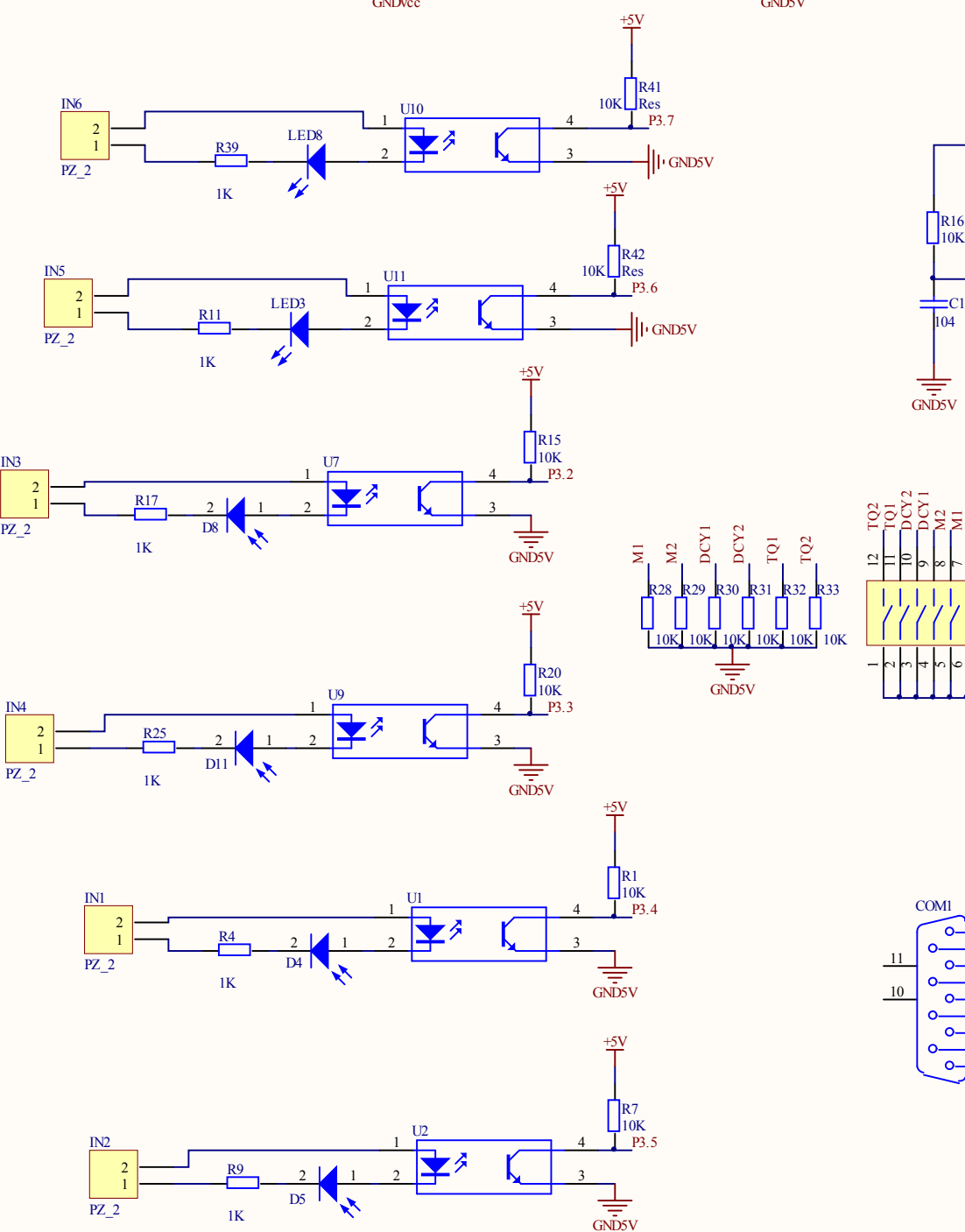
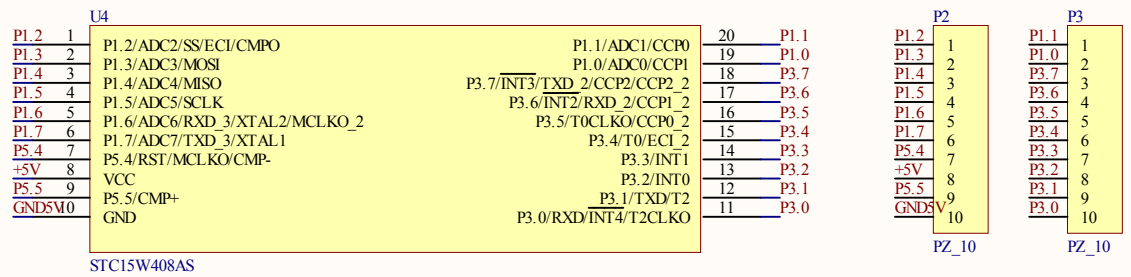


TB6560

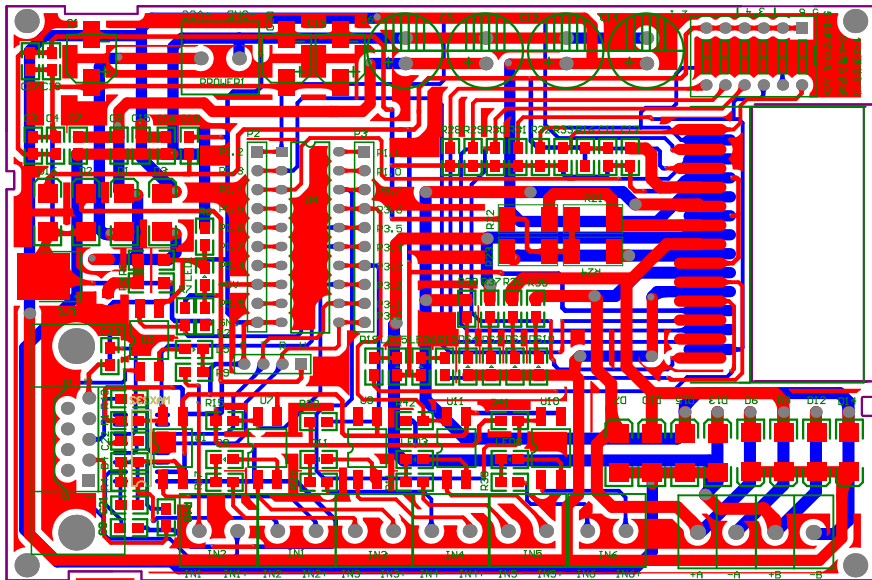


设计者 联系信息: 13603455408 QQ: 115451619
项目定制程序开发: 15981910271 (微信同号)
产品有售淘宝 1店: <https://ourhc.taobao.com>
产品有售淘宝 2店: <https://g88888.taobao.com>
产品有售淘宝企业店: <https://shop404420384.taobao.com>

Title		
Size	Number	Revision
A3		
Date:	2017/12/19	Sheet of
File:	F:\...\GYI-0244_TB6560	Drawn By: SchDoc

-76.708 (mm)-

-76.708 (mm)-



Comment	Description	Designator	Footprint	LibRef	Quantity
DJDR	电解电容	C1, C2, C19, C20	C-TP6-1	DJDR	4
CPDR	瓷片电容	C3, C4, C7, C8, C9, C10, C11, C12, C15, C16, C17, C18, C21, C22, C23	0805	CPDR	15
DJDR	电解电容	C5, C6, C13, C14	C-DJ-10	DJDR	4
	Receptacle Assembly, 9 Position, Right Angle	COM1	CKT	D Connector 9	1
ZL2JG	整流二极管	D1, D2, D3, D6, D7, D9, D10, D12, D13, D14, D15, D16	M7	ZL2JG	12
JS2JG	接收二极管	D4, D5, D8, D11	0805 - LED	JS2JG	4
LED10	发光二极管	DS2	0805 - LED	LED	1
LED11	发光二极管	DS3	0805 - LED	LED	1
LED12	发光二极管	DS4	0805 - LED	LED	1
LED9	发光二极管	DS10	0805 - LED	LED	1
PZ_2	排针—2	IN1, IN2, IN3, IN4, IN5, IN6	JK128_2	PZ_2	6
六位拨码开关		K*1	6位拨码开关	6位拨码开关	1
LED	发光二极管	LED1, LED3, LED5, LED6, LED8	0805 - LED	LED	5
SDWYG	三端稳压器	LM1	78XX	SDWYG	1
MAX232		MAX232	DIP16	MAX232	1
PZ_10	排针—10	P2, P3	HDR-10	PZ_10	2
PZ_4	排针—4	P4	KF128_4	PZ_4	1
PZ_4	排针—4	P5	HDR-4	PZ_4	1
PZ_2	排针—2	PROWER1	DYDZ	PZ_2	1
Res2	Resistor	R1, R7, R15, R16, R18, R19, R20	0805	Res2	7
Res	电阻	R2, R4, R6, R9, R11, R17, R25, R28, R29, R30, R31, R32, R33, R35, R36, R37, R38, R39, R40, R41, R42, R43	0805	Res	22
Res	电阻	R3, R5	1206	Res	2
Res2	Resistor	R21, R22, R23, R24	2512	Res2	4
Optoisolator1	Optoisolator	U1, U2, U7, U9, U10, U11	EL817-T	Optoisolator1	6
STC15W408AS		U4	DIP20	STC15W408AD_S OP20_DIP20_LSS OP20	1
BT6560	BT6560	U8	TB6560	BT6560	1