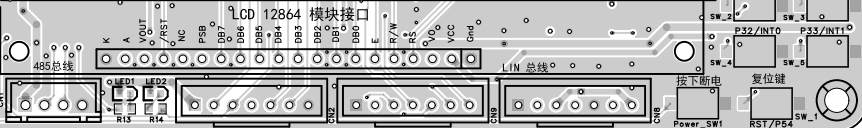
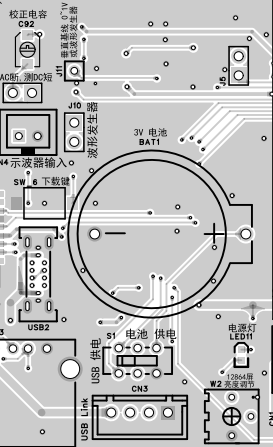
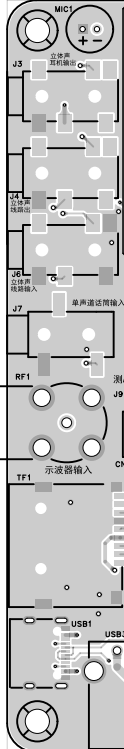
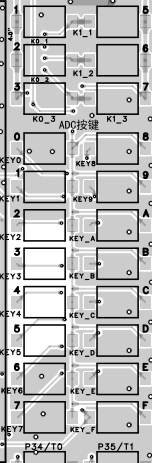
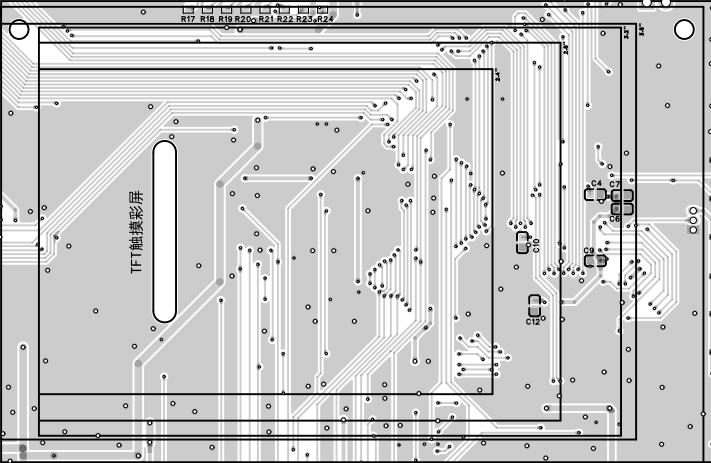
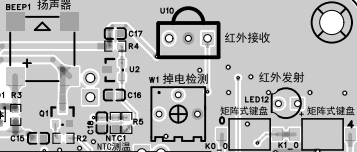
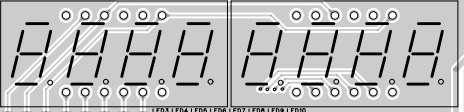
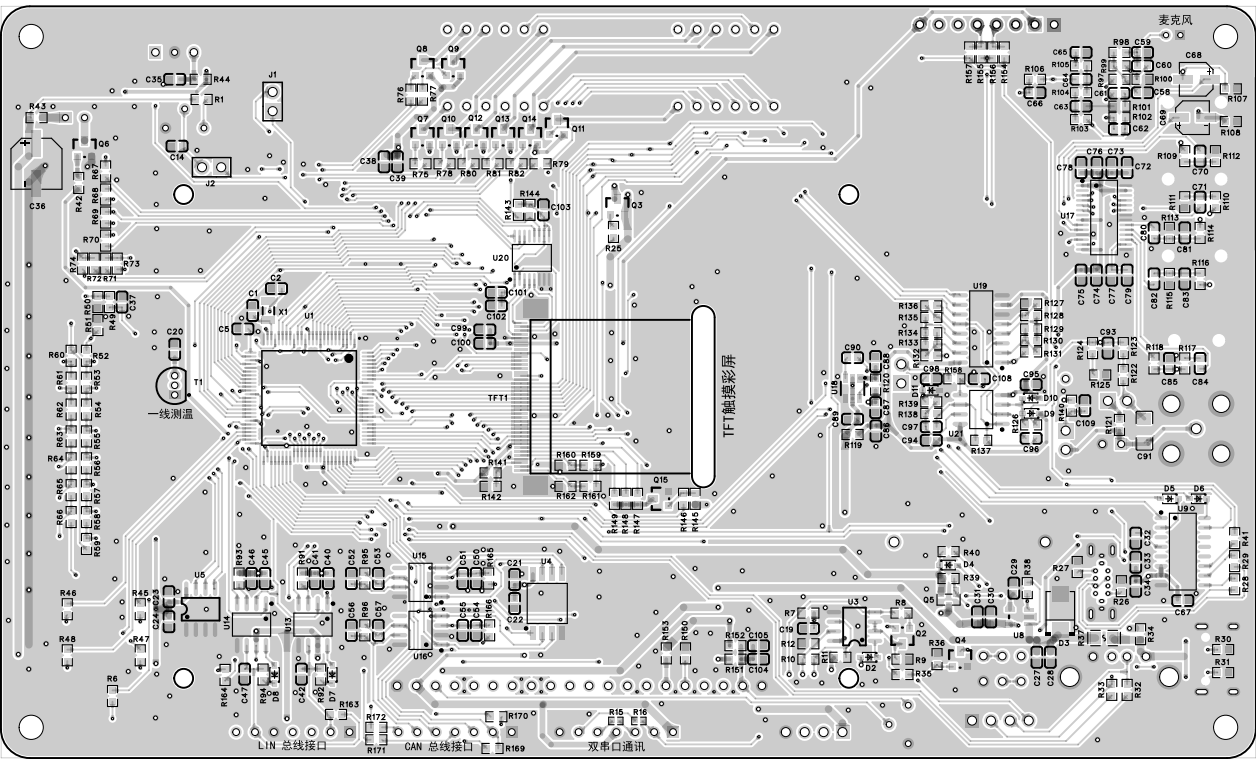


CN7 CN5 CN6  
 OLED显示屏  
**STC32G144K246 大学计划**  
**实验箱 V1.1**  
 资料下载及技术咨询:  
[www.STCAI.com](http://www.STCAI.com)  
 分销商电话:  
 0513-55012928, 55012929  
 可以直接仿真, 不需外部晶振,  
 不需外部复位, 宽电压 2.0~5.5V  
 2025-10-20





麦克风

TFT 触摸屏

一线测温

LIN 总线接口

CAN 总线接口

双串口通讯

