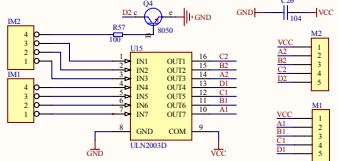
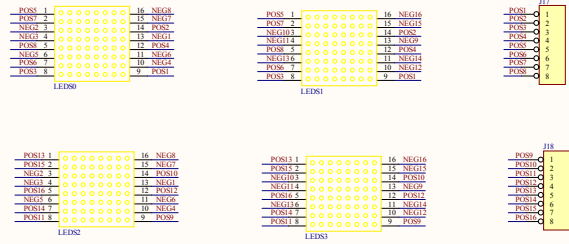


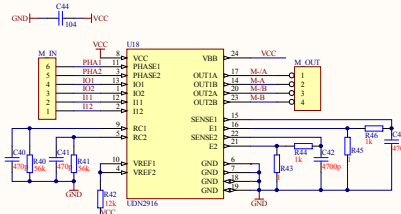
五线四相步进电机



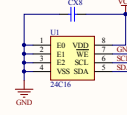
16*16点阵



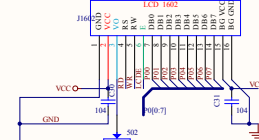
四线双极性步进电机



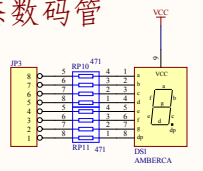
EEPROM



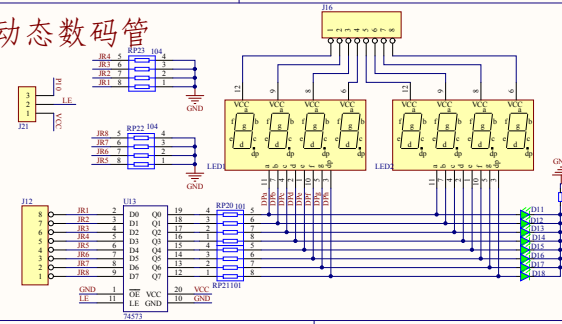
LCD1602



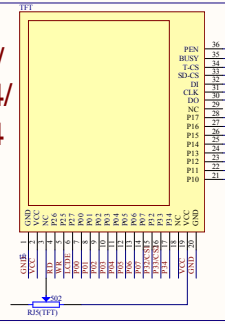
静态数码管



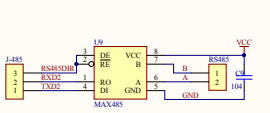
动态数码管



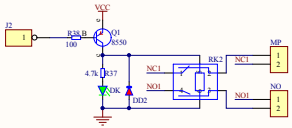
TFT 彩屏/ 12864/ 19264



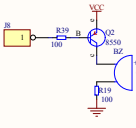
RS485



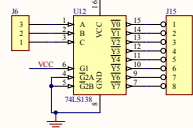
继电器



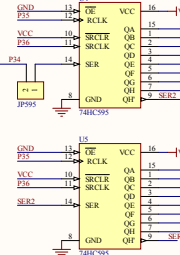
蜂鸣器



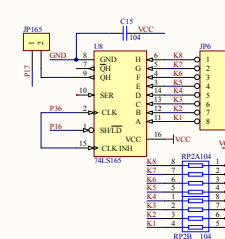
138译码器



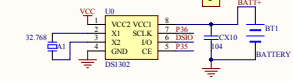
74HC595



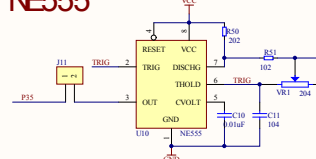
74HC165



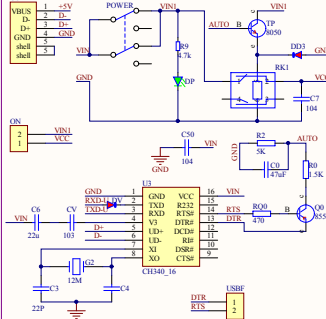
DS1302



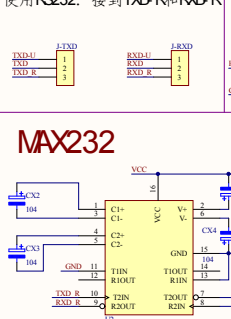
NE555



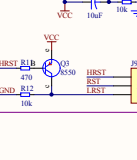
USB自动下载



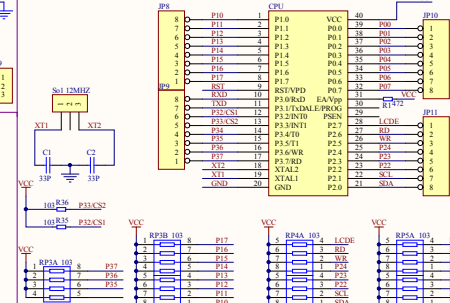
MAX232



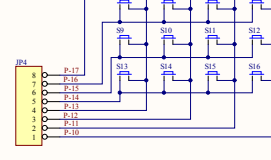
复位



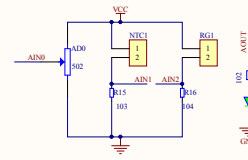
MCU



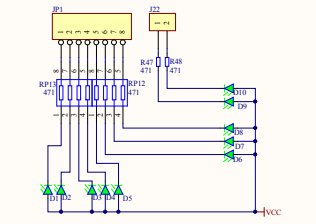
矩阵键盘



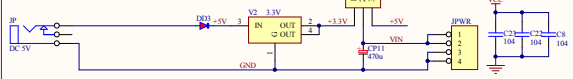
AD/DA 光敏/热敏



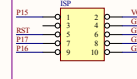
交通灯



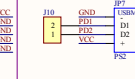
电源模块



I SP



PS2



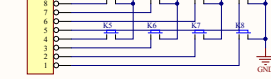
温度



红外



独立按键



SHEET NAME:	HC6800 EM3 V2.2
SHEET SIZE:	2500mil*1500mil
AUTHOR NAME:	Zhou
TIME:	2012-12-22