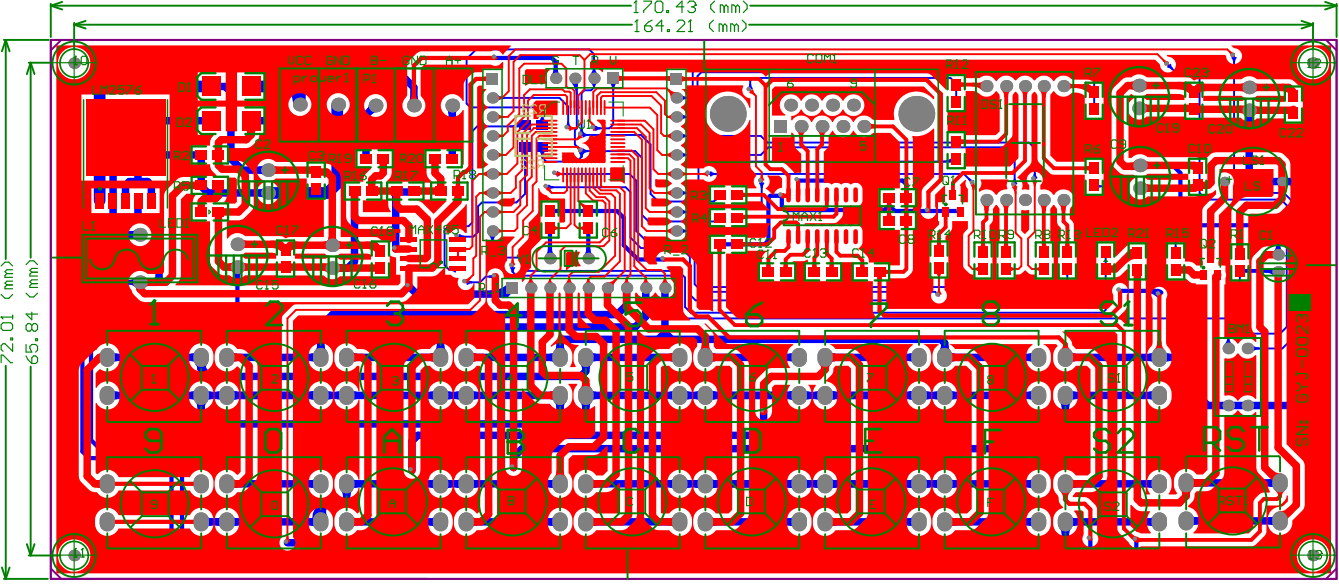


Title			
Size	Number	Revision	
A3			
Date:	2018/3/1	Sheet	of
File:	E:\...\GYJ-0023_	48	Drawn By: SchDoc



Comment	Description	Designator	Footprint	LibRef	Quantity
	Switch, 按钮开关	0, 1, 2, 3, 4, 5, 6, 7, 8, 9, A, B, C, D, E, F, RST1, S1, S2	SW-BIG	AJKG, SW-PB	19
BMKG_1		BM1	DPST-4	BMKG_1	1
10uf	Capacitor	C1	C-DJ-4	CAPACITOR POL	1
220UF/ 50V	Capacitor	C2, C9, C15, C16, C19, C20	C-DJ-8	CAPACITOR POL	6
CPDR	瓷片电容	C3, C7, C8, C10, C11, C12, C13, C14, C17, C18, C22, C23	0805	CPDR	12
30p	Capacitor	C4, C6	0805	CAP	2
D Connector 9	Receptacle Assembly, 9 Position, Right Angle	COM1	CKT	D Connector 9	1
ZL2JG	整流二极管	D1, D2	7227	ZL2JG	2
下载口	排针—4	DL1	HDR-4	PZ_4	1
DLSMG_A	独立共阴数码管	DS1	LED-BSR	DLSMG_A	1
DG	电感	L1	L_DG - fang	DG	1
LED	发光二极管	LED1	0805 - LED	LED	1
JS2JG	接收二极管	LED2	0805 - LED	JS2JG	1
LM2576T5.0	Simple Switcher 3A Step Down Voltage Regulator	LM2576	2576_TP	LM2576HVT-3.3	1
	蜂鸣器	LS1	LS1PF	FMQ	1
MAX232		MAX1	SO-16	MAX232	1
MAX485		MAX485	CDFP-8	MAX485	1
PZ_3	排针—3	P1	JK128_3	PZ_3	1
PZ_2	排针—2	prower1	JK128_2	PZ_2	1
	贴片三极管—PNP	Q1, Q2	SO-G3	TPSJG_PNP	2
10k		R1	0805	RES2	1
Res	电阻	R2, R3, R4, R5, R6, R7, R8, R9, R10, R11, R12, R13, R14, R15, R21, R22, R23	0805	Res	17
4.7K	电阻	R16, R18	0805	Res	2
120	电阻	R17	0805	Res	1
20	电阻	R19, R20	0805	Res	2
	8位排阻	R_1, R_2, R_3	HDR-9	Res PZ_8	3
STC12C5A60S2-LQFP48		U1	STC-LQFP48	STC12C5A60S2-LQFP48	1
Y1	Crystal	Y1	JZ_ZC	CRYSTAL	1